

Panasonic
BUSINESS

松下室外型全封闭冷凝机组

Panasonic Outdoor Type Fully Enclosed Condensing Units

产品销售中心

地址：大连经济技术开发区松岚街8号
电话：0411-39254210 手机：13904081623
电话：0411-39254208 手机：18088887271

华东营销中心

地址：上海市长宁区天山路600弄2号
新虹桥捷运大厦12层F座
电话：021-65042384 手机：13998590597

西北营销中心

地址：陕西省西安市莲湖区未央路12号
世纪金园A座903室
电话：029-88226149 手机：18920301580

热泵营销中心

地址：大连经济技术开发区松岚街8号
电话：0411-39255200 手机：18640941888

东北及山东营销中心

地址：大连经济技术开发区松岚街8号
电话：0411-39254242 手机：13889658510

华南营销中心

地址：深圳市福田区岗厦彩福路彩福大厦
嘉福阁D栋7E
手机：13641884809 手机：18088887271

西南营销中心

地址：重庆市渝北区黄龙路黄龙花园二期
11栋26-5
电话：023-62663371 手机：18920301580

海外营销中心

地址：大连经济技术开发区松岚街8号
电话：0411-39254200 手机：18940909583

华北营销中心

地址：北京市东城区东中街9号东环广场
A座OA4E-G号
电话：010-64173541 手机：13801256641

华中营销中心

地址：大连经济技术开发区松岚街8号
电话：027-88237610 手机：13439562916

项目中心

地址：大连经济技术开发区松岚街8号
电话：0411-39254205 手机：13704110999

松下冷机系统(大连)有限公司

Panasonic Appliances Refrigeration System (Dalian) Co.,Ltd.

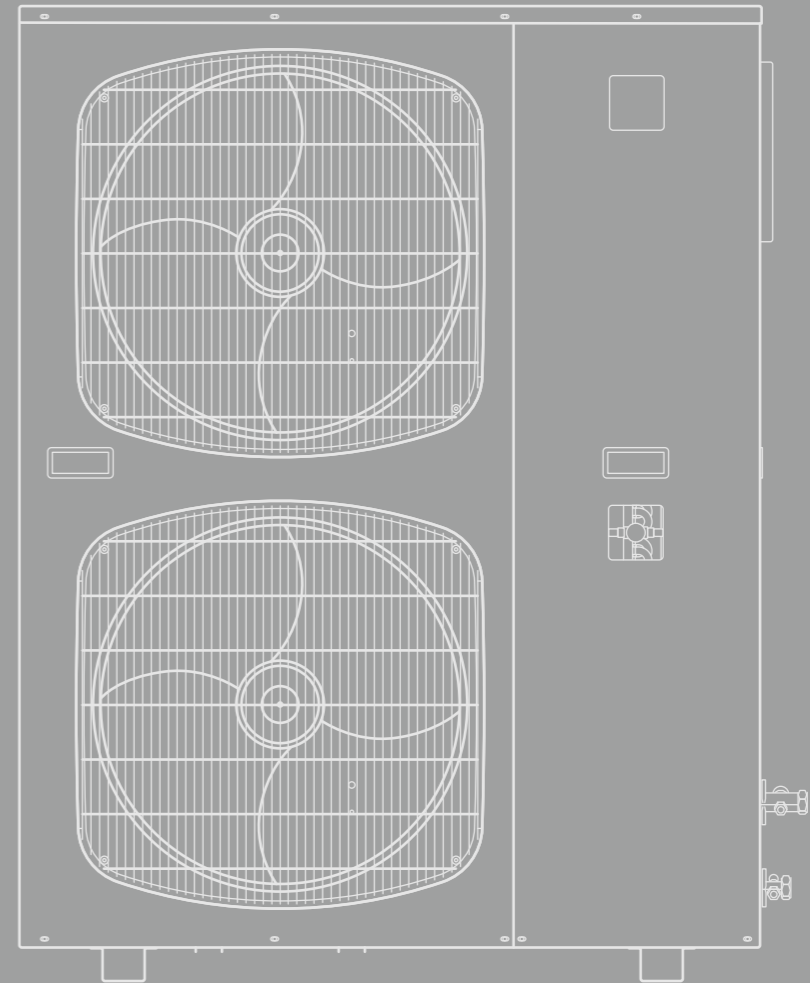
地址：大连经济技术开发区松岚街8号 邮编：116000
电话：0411-39255200 传真：0411-39255211 网址：www.rsdl-panasonic.com



官方微信平台

产品技术参数及样式仅供参考，不作为订货依据。
如有变更，恕不另行通知，请以实物为准。

广告主：松下冷机系统(大连)有限公司
发行日期：2022年8月



松下冷机系统(大连)有限公司

Panasonic Appliances Refrigeration System (Dalian) Co.,Ltd.



Projects

Supermarkets

Application
Field

Supermarkets

Projects

Contents

Product Features

- Product Features 01
- Model Description 02
- List of Refrigeration Capacity 03
- Summary of Medium Temperature Unit Configuration 18
- Summary of Low-temperature Unit Configuration 22
- Summary of Variable Frequency Unit Configuration 28
- Summary of Built-in Unit Configuration 30
- Medium and Low Temperature Variable Frequency Outdoor Condensing Unit 34

Lower energy consumption

- Panasonic high efficiency scroll compressor for fresh food;
- Microcomputer control system, more precise control of system start and stop, reducing low operating conditions and improving operational efficiency;
- Optimize condenser heat transfer efficiency and increase COP value

High ambient temperature applicable

- Optimize the design of condenser fin coils to improve heat transfer efficiency
- Optimize fan design to reduce noise while increasing heat transfer airflow
- The maximum operating ambient temperature can reach 48 °C

Reliable Performance

- Panasonic high quality specialized scroll compressor
- Rich and complete unit protection configuration
- Complete valve configuration
- Minimize threaded connections and use brazing connections as much as possible to minimize potential leakage

Low noise

- Optimize the fan design and choose a low-noise fan to control the overall noise below 58 decibels
- Optimize compressor design to reduce annoying high-frequency sound waves

Easy to use and repair

- Wide evaporation temperature range: +10 ~ -40°C
- Easy installation without need for rain protection
- Reduce threaded interfaces and leakage rates
- External connection design, no need to open for construction
- Exposed detection interface for easy detection and maintenance

Microprocessor

- More precise control to improve system efficiency
- Dynamically display the operating parameters and display fault codes when an alarm occurs
- View the operating status, historical data, and alarm records of the unit through the mobile APP

OCU - N R 300 D S F - D

Power supply	D	1 phase
Unit type	F	Air-cooled condensing unit
Temperature	QS	Low temperature with EVI
	S	Low temperature
	H	Medium & High temperature
Type of control	N/A	Fixed frequency control
	D	DC variable frequency control
	V	AC variable frequency control
Development code	0~9	
Output power	10~Y	1~ZHP (value=OPx10; Z: Integer, Y: Zx10)
Compressor type	S	Panasonic Scroll compressor
	R	Vertical rotary compressor
Refrigerant	N	R404A
	N/A	R22
Application	Air-cooled Outdoor condensing unit	

Note: ambient temperature below: -15°C, low-temperature startup option package is required.

UF - N RH 11 6 0 S F J

Origin	J	Dalian
Type	F	Integrated
Temperature	L	Low temperature
	S	Low & medium temperature
	H	High temperature
Design Code	0~9	
Power supply	N/A	3 phase/380V
	3	3 phase/200V
	6	1 phase/220V
	8	3 phase/380V
Output power	8: 750W 11: 1100W 15: 1500W 22: 2200W	
Compressor type	RH	Horizontal rotary compressor
	R	Vertical rotary compressor
	S	Scroll compressor
Refrigerant	N	R404A
	N/A	R22
Application	UF	Air-cooled indoor unit

1. Medium Temperature Scroll Unit

MT | Ambient Temp.: -25°C ~ +48°C | Evaporative Temp.: -15°C ~ +10°C | Power Supply: 3Φ380V 50Hz | R22

Model	Evaporative Temp. (°C)	Ambient Temp.: 32°C			Ambient Temp.: 38°C			Ambient Temp.: 43°C		
		Capacity(kw)	Power input (kw)	Current(A)	Capacity(kw)	Power input (kw)	Current(A)	Capacity(kw)	Power input (kw)	Current(A)
OCU-S400HF	-15	5.13	2.79	5.50	4.80	3.14	6.00	4.49	3.47	6.49
	-10	6.56	2.81	5.53	5.91	3.23	6.13	5.52	3.59	6.67
	-5	8.04	2.94	5.71	7.29	3.34	6.31	6.89	3.69	6.82
	0	9.60	3.02	5.83	8.99	3.39	6.37	8.19	3.81	7.00
	5	11.51	3.31	6.25	10.53	3.57	6.64	9.65	3.97	7.26
	10	13.36	3.48	6.51	12.56	3.92	7.19	—	—	—
OCU-S500HF	-15	6.58	3.99	3.48	6.14	3.90	7.14	5.73	4.32	7.76
	-10	8.19	4.04	3.53	7.55	4.03	7.32	7.00	4.47	7.97
	-5	10.00	4.18	3.67	9.26	4.08	7.38	8.62	4.64	8.22
	0	11.93	4.30	3.80	11.07	4.27	7.68	10.33	4.76	8.44
	5	14.24	4.56	4.08	13.03	4.42	7.92	12.23	4.87	8.60
	10	16.59	4.86	4.08	15.44	4.72	8.38	—	—	—
OCU-S600HF	-15	7.93	4.64	7.59	7.21	4.69	8.51	—	—	—
	-10	9.68	4.82	7.71	8.79	4.80	8.67	8.10	5.40	9.59
	-5	12.18	5.01	7.84	11.08	4.88	8.80	10.30	5.52	9.79
	0	14.36	5.20	8.28	13.16	5.11	9.15	12.32	5.74	10.15
	5	16.36	5.55	8.63	15.58	5.32	9.48	14.42	5.99	10.56
	10	19.08	5.79	9.01	17.72	5.73	10.15	—	—	—
OCU-S700HF	-15	9.14	5.07	8.64	8.27	4.99	9.34	7.78	5.50	10.09
	-10	10.93	5.29	8.80	9.67	5.30	9.80	9.26	5.67	10.36
	-5	13.10	5.61	9.24	12.52	5.54	10.15	11.51	6.02	10.89
	0	15.20	6.02	9.74	14.43	5.94	10.76	13.50	6.56	11.74
	5	17.92	6.29	10.14	16.86	6.13	11.07	15.81	6.82	12.13
	10	21.24	6.56	10.68	19.01	6.53	11.68	—	—	—
OCU-S800HF	-15	11.28	6.23	10.83	10.71	6.02	11.52	9.54	6.60	12.44
	-10	14.15	6.41	10.65	13.18	6.40	12.11	12.22	6.87	12.86
	-5	17.32	6.78	11.18	16.62	6.21	11.77	14.84	7.32	13.57
	0	20.49	6.99	11.51	19.24	6.87	12.81	17.83	7.75	14.25
	5	23.36	7.38	12.56	22.00	7.55	13.89	20.75	8.18	14.92
	10	25.09	8.04	12.98	24.28	7.73	14.19	23.88	7.95	14.57

List of Capacity


2. Medium Temperature Scroll Unit

 R404A

MT		Ambient Temp.: -25°C ~ +48°C			Evaporative Temp.: -15°C ~ +10°C			Power supply: 3Φ380V 50Hz		
Model	Evaporative Temp. (°C)	Ambient Temp.: 32°C			Ambient Temp.: 38°C			Ambient Temp.: 43°C		
		Capacity(kw)	Power(kw)	Current(A)	Capacity(kw)	Power(kw)	Current(A)	Capacity(kw)	Power(kw)	Current(A)
OCU-NS400HF	-15	5.71	3.18	6.29	5.05	3.59	6.86	4.60	3.96	7.39
	-10	6.80	3.32	6.48	6.06	3.71	7.04	5.43	4.08	7.56
	-5	8.40	3.43	6.63	7.57	3.82	7.18	6.90	4.20	7.74
	0	9.85	3.59	6.87	9.01	4.04	7.50	8.28	4.45	8.12
	5	11.30	3.71	7.04	10.22	4.16	7.70	9.32	4.59	8.34
	10	12.96	3.83	7.12	11.79	4.30	7.84	—	—	—
	OCU-NS500HF	-15	7.20	3.99	7.30	6.47	4.53	8.10	5.84	5.01
	-10	8.66	4.04	7.37	7.79	4.74	8.43	6.83	5.10	8.99
	-5	11.03	4.18	7.58	9.88	4.76	8.46	8.88	5.34	9.34
	0	12.76	4.30	7.76	11.46	4.85	8.59	10.59	5.35	9.37
	5	14.54	4.56	8.16	13.61	4.99	8.82	12.61	5.57	9.72
	10	16.98	4.86	8.63	15.52	5.18	9.12	—	—	—
OCU-NS600HF	-15	8.77	4.64	8.39	7.56	5.32	9.43	6.72	5.99	10.45
	-10	10.41	4.82	8.67	9.35	5.42	9.59	8.40	6.08	10.62
	-5	12.81	5.01	8.95	11.55	5.70	10.10	10.61	6.46	11.21
	0	14.99	5.20	9.26	13.65	5.99	10.48	12.39	6.75	11.75
	5	17.37	5.55	9.83	15.65	6.27	10.92	14.39	7.03	12.20
	10	19.80	5.79	10.20	18.06	6.65	11.57	—	—	—
OCU-NS700HF	-15	9.42	5.07	9.50	8.48	5.78	10.55	7.60	6.38	11.49
	-10	11.53	5.29	9.83	10.28	5.94	10.80	9.24	6.66	11.92
	-5	14.02	5.61	10.31	12.72	6.25	11.28	11.87	7.00	12.46
	0	16.61	6.02	10.94	15.25	6.60	11.84	13.95	7.30	12.95
	5	18.31	6.29	11.35	17.20	6.75	12.08	15.77	7.46	13.21
	10	22.70	6.56	11.80	19.75	7.34	13.04	—	—	—
	OCU-NS800HF	-15	12.00	6.23	11.80	11.14	6.83	12.74	10.03	7.40
-10		14.12	6.41	12.08	13.03	7.18	13.29	12.25	7.66	14.05
-5		17.71	6.78	12.64	16.53	7.36	13.56	14.92	7.91	14.45
0		20.27	6.99	12.97	18.69	7.75	14.19	16.76	8.40	15.24
5		22.26	7.38	13.59	20.42	8.04	14.67	18.62	8.56	15.51
10		26.57	8.04	14.67	24.97	8.65	15.67	22.92	9.14	16.48



List of Capacity

3. Single phase low & medium temperature rotary unit

 R404A

LT		MT		Ambient Temp.: -25°C ~ +48°C			Evaporative Temp.: -40°C ~ -5°C			Power supply: 1Φ220V 50Hz		
Model	Evaporative Temp. (°C)	Ambient Temp.: 32°C			Ambient Temp.: 38°C			Ambient Temp.: 43°C				
		Capacity(kw)	Power(kw)	Current(A)	Capacity(kw)	Power(kw)	Current(A)	Capacity(kw)	Power(kw)	Current(A)		
OCU-NR200SF-D	-40	0.97	1.42	7.86	0.93	1.53	8.28	0.85	1.58	8.44		
	-35	1.26	1.46	8.03	1.16	1.58	8.44	1.06	1.67	8.82		
	-30	1.55	1.52	8.22	1.40	1.64	8.67	1.30	1.75	9.12		
	-25	1.94	1.56	8.40	1.74	1.69	8.89	1.58	1.85	9.53		
	-20	2.34	1.63	8.64	2.11	1.76	9.18	1.90	1.93	9.87		
	-15	2.83	1.68	8.84	2.54	1.79	9.28	2.26	1.94	9.92		
	-10	3.33	1.71	8.96	2.96	1.87	9.64	2.71	2.00	10.16		
	-5	4.16	1.74	9.06	3.88	1.90	9.74	3.52	2.06	10.40		
OCU-NR300SF-D	-40	1.41	1.98	11.99	1.28	2.16	12.53	1.16	2.30	13.01		
	-35	1.74	2.08	12.29	1.57	2.24	12.82	1.45	2.40	13.35		
	-30	2.20	2.18	12.63	2.01	2.36	13.21	1.83	2.52	13.80		
	-25	2.66	2.28	12.95	2.41	2.46	13.59	2.22	2.63	14.22		
	-20	3.30	2.36	13.26	2.94	2.59	14.07	2.67	2.77	14.75		
	-15	3.90	2.46	13.62	3.51	2.66	14.36	3.13	2.90	15.29		
	-10	4.49	2.57	14.02	4.15	2.79	14.89	3.82	3.00	15.73		
	-5	5.66	2.64	14.25	5.06	2.88	15.20	4.80	3.09	16.08		

4. low & medium temperature rotary unit

LT		MT		Ambient Temp.: -25°C ~ +48°C			Evaporative Temp.: -40°C ~ -5°C			Power supply: 3Φ380V 50Hz		
Model	Evaporative Temp. (°C)	Ambient Temp.: 32°C			Ambient Temp.: 38°C			Ambient Temp.: 43°C				
		Capacity(kw)	Power(kw)	Current(A)	Capacity(kw)	Power(kw)	Current(A)	Capacity(kw)	Power(kw)	Current(A)		
OCU-R300SF  R22	-40	1.33	1.50	3.02	1.19	1.64	3.21	1.08	1.78	3.41		
	-35	1.70	1.60	3.15	1.52	1.74	3.36	1.40	1.88	3.56		
	-30	2.14	1.67	3.25	1.94	1.85	3.51	1.83	2.02	3.75		
	-25	2.64	1.81	3.44	2.42	1.98	3.70	2.23	2.13	3.93		
	-20	3.28	1.87	3.55	2.95	2.10	3.89	2.74	2.27	4.15		
	-15	3.95	2.15	3.96	3.62	2.31	4.22	3.35	2.50	4.51		
	-10	4.69	2.26	4.15	4.29	2.48	4.48	3.94	2.68	4.80		
	-5	5.60	2.37	4.30	5.16	2.60	4.69	4.73	2.84	5.06		
OCU-NR300SF  R404A	-40	1.35	1.74	3.35	1.21	1.88	3.56	1.11	2.02	3.77		
	-35	1.71	1.81	3.47	1.55	1.98	3.70	1.43	2.12	3.92		
	-30	2.23	1.93	3.63	1.98	2.07	3.85	1.83	2.23	4.10		
	-25	2.64	2.03	3.79	2.37	2.21	4.07	2.19	2.38	4.32		
	-20	3.16	2.10	3.88	2.84	2.29	4.18	2.65	2.51	4.53		
	-15	3.90	2.19	4.04	3.47	2.41	4.38	3.11	2.60	4.68		
	-10	4.58	2.30	4.20	4.12	2.52	4.54	3.65	2.72	4.86		
-5	5.75	2.38	4.33	5.08	2.63	4.72	4.70	2.82	5.03			

Note: 2HP, 3HP, at the moment of starting a single phase unit, ensure that the voltage reference value is within ± 10% range. If it exceeds the range, the unit cannot start, which may cause damage to the unit.

List of Capacity

5、Low temperature scroll VI unit

R22 R404A

LT	Ambient Temp.: -25°C ~ +48°C			Evaporative Temp.: -40°C ~ -15°C			Power supply: 3Φ380V 50Hz				
	Model	Evaporative Temp. (°C)	Ambient Temp.: 32°C			Ambient Temp.: 38°C			Ambient Temp.: 43°C		
			Capacity(kw)	Power(kw)	Current(A)	Capacity(kw)	Power(kw)	Current(A)	Capacity(kw)	Power(kw)	Current(A)
OCU-S400QSF	-40	2.24	2.62	5.26	2.21	3.01	5.79	2.16	3.61	6.63	
	-35	2.91	2.82	5.54	2.77	3.26	6.14	2.68	3.71	6.79	
	-30	3.57	2.86	5.59	3.40	3.33	6.24	3.31	3.83	6.97	
	-25	4.46	2.97	5.75	4.24	3.45	6.44	4.10	3.92	7.12	
	-20	5.45	3.04	5.85	5.27	3.51	6.52	5.00	3.95	7.18	
OCU-S500QSF	-15	6.48	3.09	5.92	6.16	3.54	6.57	6.04	4.04	7.31	
	-40	3.05	3.61	6.75	2.92	4.05	7.38	2.76	4.47	7.97	
	-35	3.81	3.71	6.89	3.73	4.18	7.58	3.44	4.52	8.05	
	-30	4.78	3.82	7.05	4.56	4.33	7.80	4.32	4.62	8.21	
	-25	5.71	3.91	7.18	5.28	4.47	8.01	5.19	4.81	8.50	
OCU-S600QSF	-20	6.87	3.93	7.22	6.58	4.55	8.13	6.30	4.91	8.67	
	-15	8.15	4.04	7.37	7.99	4.59	8.19	7.59	5.04	8.88	
	-40	3.30	3.88	7.61	3.22	4.33	8.21	3.15	4.88	9.00	
	-35	4.14	3.92	7.66	3.94	4.43	8.35	3.83	4.95	9.10	
	-30	5.20	4.02	7.80	4.95	4.53	8.52	4.75	5.04	9.22	
OCU-S800QSF	-25	6.27	4.05	7.85	6.01	4.63	8.64	5.82	5.14	9.38	
	-20	7.52	4.19	8.05	7.23	4.75	8.84	6.85	5.28	9.62	
	-15	9.00	4.31	8.23	8.65	4.84	8.97	8.25	5.39	9.78	
	-40	4.68	5.29	10.29	4.48	5.97	11.29	4.35	6.82	12.58	
	-35	6.00	5.62	10.80	5.82	6.20	11.66	5.55	7.03	12.92	
	-30	7.47	5.75	11.00	7.18	6.55	12.21	7.01	7.45	13.61	
	-25	9.53	6.12	11.57	8.98	6.84	12.67	8.60	7.73	14.08	
OCU-NS400QSF	-20	11.25	6.4	12.00	10.93	7.24	13.30	10.39	7.96	14.44	
	-15	13.52	6.63	12.36	12.9	7.63	13.93	12.37	8.23	14.88	
	-10	15.77	6.9	12.8	15.16	7.90	14.39	14.58	8.47	15.33	
	-5	18.99	7.35	13.51	18.41	8.37	15.52	17.45	8.89	15.96	
	-40	2.50	3.22	6.10	2.28	3.82	6.97	2.17	4.50	8.00	
	-35	3.18	3.32	6.25	2.94	3.92	7.13	2.78	4.55	8.06	
	-30	4.07	3.43	6.42	3.77	4.03	7.30	3.41	4.63	8.20	
OCU-NS500QSF	-25	4.98	3.49	6.50	4.71	4.08	7.37	4.29	4.66	8.25	
	-20	5.81	3.52	6.56	5.70	4.09	7.41	5.26	4.74	8.41	
	-15	6.81	3.54	6.59	6.62	4.17	7.54	6.34	4.77	8.45	
	-40	3.35	4.16	7.53	3.18	4.77	8.43	3.04	5.31	9.20	
	-35	4.25	4.24	7.65	3.98	4.85	8.56	3.90	5.37	9.27	
OCU-NS600QSF	-30	5.21	4.32	7.77	4.96	5.04	8.84	4.78	5.46	9.51	
	-25	6.45	4.35	7.83	6.08	5.04	8.88	5.67	5.62	9.77	
	-20	7.67	4.45	7.97	7.27	5.10	8.97	6.85	5.73	9.95	
	-15	8.73	4.66	8.31	8.53	5.14	9.04	7.92	5.78	10.03	
	-40	3.73	4.39	8.31	3.45	5.31	9.62	3.27	6.13	10.84	
OCU-NS800QSF	-35	4.68	4.44	8.39	4.33	5.38	9.73	4.07	6.14	10.88	
	-30	5.76	4.66	8.71	5.26	5.42	9.82	5.09	6.15	10.90	
	-25	6.95	4.77	8.87	6.28	5.54	10.00	5.89	6.29	11.14	
	-20	8.31	4.80	8.93	7.47	5.59	10.08	6.99	6.36	11.25	
	-15	9.58	4.93	9.12	8.91	5.77	10.36	8.47	6.43	11.37	
OCU-NS800QSF	40	5.97	5.71	10.94	5.64	6.19	11.65	5.46	6.70	12.44	
	-35	7.44	6.03	11.43	7.35	6.59	12.28	6.84	7.02	12.94	
	-30	9.22	6.26	11.78	8.79	6.78	12.58	8.46	7.36	13.49	
	-25	11.16	6.82	12.65	10.58	7.53	13.78	10.15	8.00	14.54	
	-20	13.26	7.20	13.27	12.49	7.72	14.10	11.45	8.25	14.94	
	-15	14.98	7.28	13.40	13.33	7.99	14.54	12.57	8.54	15.44	
	-10	17.65	7.71	14.08	16.19	8.42	15.23	14.91	9.14	16.44	
-5	21.22	8.23	14.90	19.05	9.02	16.21	17.53	9.55	17.11		

List of Capacity

6、Low temperature scroll EVI unit

R22 R404A

LT	Ambient Temp.: -25°C ~ +48°C			Evaporative Temp.: -40°C ~ -15°C			Power supply: 3Φ380V 50Hz				
	Model	Evaporative Temp. (°C)	Ambient Temp.: 32°C			Ambient Temp.: 38°C			Ambient Temp.: 43°C		
			Capacity(kw)	Power(kw)	Current(A)	Capacity(kw)	Power(kw)	Current(A)	Capacity(kw)	Power(kw)	Current(A)
OCU-S400SF	-40	1.96	2.56	5.17	1.83	2.95	5.69	1.69	3.30	6.18	
	-35	2.46	2.60	5.23	2.33	3.00	5.78	2.28	3.38	6.31	
	-30	2.84	2.64	5.30	2.76	3.05	5.85	2.55	3.43	6.38	
	-25	3.68	2.69	5.35	3.28	3.09	5.91	3.15	3.50	6.48	
	-20	4.47	2.73	5.42	4.11	3.17	6.04	3.87	3.58	6.62	
OCU-S500SF	-15	5.40	2.79	5.51	4.89	3.23	6.11	4.69	3.61	6.66	
	-40	2.61	3.33	6.37	2.40	3.83	7.06	2.28	4.42	7.92	
	-35	3.29	3.36	6.42	3.06	3.87	7.12	2.84	4.49	8.04	
	-30	4.02	3.42	6.50	3.75	3.92	7.21	3.50	4.52	8.09	
	-25	4.90	3.51	6.63	4.61	3.98	7.30	4.26	4.65	8.28	
OCU-S600SF	-20	5.99	3.65	6.83	5.64	4.12	7.51	5.25	4.67	8.33	
	-15	7.22	3.66	6.85	6.85	4.18	7.60	6.35	4.74	8.44	
	-40	2.87	3.68	7.62	2.69	4.09	8.16	2.53	4.59	8.81	
	-35	3.43	3.70	7.65	3.30	4.14	8.21	3.10	4.67	8.92	
	-30	4.23	3.76	7.73	4.01	4.21	8.31	3.78	4.78	9.07	
OCU-S600SF	-25	5.10	3.80	7.79	4.76	4.32	8.46	4.47	4.84	9.15	
	-20	6.07	3.91	7.92	5.69	4.38	8.54	5.34	4.85	9.20	
	-15	7.37	3.96	8.00	6.85	4.45	8.64	6.46	4.92	9.30	
	-40	2.04	3.04	5.84	1.85	3.55	6.56	1.72	4.02	7.26	
	-35	2.48	3.05	5.86	2.25	3.60	6.65	2.04	4.09	7.38	
OCU-NS400SF	-30	3.11	3.08	5.90	2.75	3.61	6.66	2.63	4.09	7.39	
	-25	3.76	3.01	5.81	3.34	3.65	6.73	3.15	4.10	7.41	
	-20	4.50	3.08	5.92	4.03	3.52	6.56	3.83	4.12	7.45	
	-15	5.41	3.16	6.04	4.81	3.61	6.68	4.37	4.03	7.31	
	-40	2.61	3.85	7.08	2.36	4.43	7.92	2.26	4.95	8.72	
OCU-NS500SF	-35	3.19	3.91	7.18	2.85	4.47	8.00	2.55	5.03	8.83	
	-30	3.95	4.02	7.33	3.55	4.52	8.08	3.17	5.08	8.93	
	-25	4.62	3.81	7.04	4.36	4.58	8.18	4.12	5.11	8.98	
	-20	5.76	4.05	7.25	5.11	4.44	7.97	4.77	5.18	9.09	
	-15	7.05	4.06	7.41	6.22	4.60	8.23	5.55	5.07	8.94	
OCU-NS600SF	-40	2.91	4.06	7.81	2.57	4.93	9.04	2.42	5.71	10.27	
	-35	3.52	4.10	7.87	3.09	4.97	9.09	2.67	5.74	10.36	
	-30	4.37	4.34	8.22	3.77	4.87	8.98	3.38	5.72	10.24	
	-25	4.98	4.18	7.98	4.50	5.03	9.21	4.28	5.72	10.24	
	-20	6.25	4.37	8.12	5.25	4.86	8.96	4.87	5.74	10.28	
	-15	7.73	4.29	8.13	6.50	5.16	9.43	5.94	5.65	10.13	

List of Capacity

20、OCU-NR800DSF Low & medium temperature inverter unit R404A

Frequency	Evaporative Temp. (°C)	Ambient Temp.: 32°C			Ambient Temp.: 38°C			Ambient Temp.: 43°C		
		Capacity(kw)	Power(kw)	Current(A)	Capacity(kw)	Power(kw)	Current(A)	Capacity(kw)	Power(kw)	Current(A)
90HZ	-35	3.53	2.79	5.71	3.29	3.04	5.79	3.25	3.44	6.85
	-30	4.17	2.74	5.94	3.86	3.21	6.21	3.81	3.55	7.09
	-25	4.65	2.75	6.14	4.35	3.10	6.20	4.30	3.50	7.37
	-20	5.08	2.80	5.80	4.69	3.15	6.65	4.52	3.35	7.63
	-15	6.01	2.85	5.71	5.66	3.20	6.50	5.16	3.29	7.63
	-10	7.52	2.88	5.97	6.82	3.22	6.52	6.23	3.44	7.57
	-5	9.63	3.00	6.11	8.85	3.37	6.79	8.28	3.60	7.29
	0	11.25	3.18	6.41	10.69	3.44	6.94	9.86	3.72	7.53
	5	13.29	3.22	6.49	12.48	3.53	7.15	11.62	3.82	7.75
180HZ	-35	5.67	4.04	8.18	5.24	4.57	9.07	4.78	5.03	9.89
	-30	6.54	4.22	8.52	6.39	4.62	9.16	5.75	5.18	10.16
	-25	8.22	4.59	8.55	7.67	4.83	9.45	7.22	5.21	10.20
	-20	9.52	4.76	8.52	8.86	4.95	9.65	8.57	5.36	10.56
	-15	10.03	4.65	9.02	9.35	5.10	9.73	9.85	5.45	10.65
	-10	11.46	4.86	9.62	10.56	5.25	10.07	10.53	5.65	10.59
	-5	14.23	5.03	9.91	13.40	5.38	10.54	12.57	5.75	11.17
	0	16.92	5.19	10.21	15.90	5.66	11.00	14.80	6.04	11.64
	5	19.45	5.55	10.81	18.13	5.95	11.51	16.99	6.39	12.26
240HZ	-35	7.30	5.86	11.62	6.81	6.44	12.55	6.26	7.01	13.53
	-30	8.53	6.26	12.22	8.13	6.80	13.17	7.48	7.41	14.29
	-25	10.31	6.56	12.75	9.76	7.13	13.72	8.91	7.72	14.75
	-20	12.26	6.85	13.14	11.63	7.54	14.43	10.53	8.24	15.64
	-15	14.15	6.90	13.85	13.67	7.99	15.36	12.22	8.59	16.33
	-10	15.65	7.10	14.51	15.45	8.15	16.11	13.84	9.10	17.19
	-5	17.94	7.34	14.88	17.38	8.63	16.56	15.61	9.25	17.45
	0	20.52	7.91	15.21	18.79	8.71	16.89	17.75	9.34	17.88
	5	22.08	8.26	15.85	20.60	8.79	17.23	20.02	9.44	18.23

List of Capacity

18、OCU-NR800DSFK Low & medium temperature inverter unit R404A

Speed rate	Evaporative Temp. (°C)	Condensing Temp.: 40°C			Condensing Temp.: 45°C			Condensing Temp.: 50°C		
		Capacity(kw)	Power(kw)	Current(A)	Capacity(kw)	Power(kw)	Current(A)	Capacity(kw)	Power(kw)	Current(A)
40rps	-40	1.73	2.25	4.96	1.73	2.41	5.16	1.66	2.61	5.43
	-35	2.15	2.35	5.11	2.13	2.52	5.32	2.08	2.72	5.59
	-30	2.71	2.44	5.24	2.66	2.62	5.47	2.62	2.82	5.75
	-25	3.41	2.53	5.36	3.33	2.72	5.62	3.30	2.93	5.90
	-20	4.22	2.62	5.47	4.15	2.81	5.75	4.10	3.02	6.04
	-15	5.60	2.86	5.75	5.51	3.07	6.05	5.45	3.32	6.36
	-10	6.77	2.93	5.85	6.68	3.15	6.16	6.61	3.41	6.50
60rps	-5	8.10	2.99	5.95	8.00	3.22	6.27	7.90	3.49	6.64
	-40	2.84	3.34	7.29	2.82	3.59	7.59	2.72	3.87	7.97
	-35	3.54	3.50	7.51	3.49	3.74	7.82	3.41	4.03	8.21
	-30	4.45	3.63	7.70	4.38	3.90	8.05	4.30	4.19	8.44
	-25	5.58	3.76	7.88	5.48	4.03	8.24	5.41	4.35	8.66
	-20	6.93	3.89	8.04	6.81	4.17	8.44	6.73	4.48	8.87
	-15	8.84	4.37	8.39	8.70	4.69	8.82	8.60	5.06	9.28
80rps	-10	10.69	4.47	8.54	10.55	4.82	8.99	10.42	5.21	9.49
	-5	12.78	4.57	8.68	12.64	4.92	9.14	12.47	5.34	9.69
	-40	3.78	4.32	9.38	3.77	4.63	9.75	3.63	5.00	10.26
	-35	4.71	4.51	9.65	4.65	4.84	10.05	4.54	5.21	10.55
	-30	5.92	4.69	9.89	5.82	5.03	10.34	5.73	5.41	10.85
	-25	7.43	4.86	10.12	7.29	5.21	10.61	7.20	5.62	11.13
	-20	9.22	5.01	10.33	9.06	5.39	10.86	8.97	5.80	11.41
80rps	-15	11.31	6.12	11.91	11.13	6.58	12.51	11.01	7.09	13.18
	-10	13.69	6.27	12.11	13.50	6.75	12.76	13.34	7.30	13.47
	-5	16.35	6.41	12.31	16.16	6.90	12.99	15.95	7.49	13.76

19、OCU-NS800DSFK Low & medium temperature inverter unit R404A

Speed rate	Evaporative Temp. (°C)	Condensing Temp.: 40°C			Condensing Temp.: 45°C			Condensing Temp.: 50°C		
		Capacity(kw)	Power(kw)	Current(A)	Capacity(kw)	Power(kw)	Current(A)	Capacity(kw)	Power(kw)	Current(A)
30HZ	-40	2.70	3.80	7.96	2.52	4.30	8.58	2.34	4.85	9.36
	-35	3.36	3.90	8.19	3.18	4.35	8.81	2.88	4.85	9.52
	-30	4.20	4.00	8.35	3.90	4.40	8.97	3.72	4.85	9.67
	-25	5.22	4.15	8.58	4.92	4.50	9.20	4.68	4.90	9.83
	-20	6.54	4.25	8.74	6.18	4.55	9.36	5.82	4.95	9.98
	-15	8.11	4.43	9.12	7.36	4.74	9.76	7.02	5.10	10.32
	-10	9.95	4.48	9.36	9.26	4.74	9.84	8.80	5.05	10.48
45HZ	-5	12.19	4.58	9.44	11.39	4.69	10.00	10.64	5.00	10.56
	-40	4.37	5.10	9.59	3.85	5.60	9.98	3.80	6.15	10.45
	-35	5.29	5.30	9.98	5.00	5.80	10.45	4.72	6.35	10.92
	-30	6.50	5.50	10.45	6.15	6.00	10.84	5.87	6.55	11.31
	-25	8.05	5.70	10.84	7.65	6.20	11.23	7.30	6.75	11.70
	-20	10.01	5.90	11.23	9.49	6.40	11.62	9.03	6.95	12.01
	-15	12.10	6.33	12.14	11.11	6.80	12.55	10.62	7.36	12.96
60HZ	-10	14.63	6.54	12.55	13.64	7.06	12.87	12.98	7.57	13.20
	-5	17.60	6.80	12.79	16.50	7.26	13.12	15.40	7.83	13.45
	-40	5.36	7.00	12.77	4.99	7.67	13.30	4.67	8.39	13.76
	-35	6.51	7.26	13.38	6.14	7.93	13.91	5.67	8.65	14.36
	-30	7.93	7.52	13.98	7.56	8.19	14.44	7.19	8.96	14.90
	-25	9.92	7.78	14.35	9.40	8.50	14.97	8.98	9.12	15.43
	-20	12.29	8.09	14.77	11.66	8.76	15.43	11.03	9.53	15.88
60HZ	-15	14.80	8.67	15.20	13.60	9.42	16.64	13.00	10.22	17.12
	-10	18.00	8.99	15.62	16.70	9.74	17.04	15.90	10.54	17.44
	-5	21.50	9.36	16.05	20.20	10.06	17.44	18.90	10.86	17.76

List of Capacity

7. OCU-NR300DSF Low & medium temperature inverter unit										
R404A										
LT MT Inverter Ambient Temp.: -25°C ~ +48°C Evaporative Temp.: -40°C ~ -5°C Power supply: 3Φ380V 50Hz										
Frequency	Evaporative Temp.: (°C)	Ambient Temp.: 32°C			Ambient Temp.: 38°C			Ambient Temp.: 43°C		
		Capacity(kw)	Power(kw)	Current(A)	Capacity(kw)	Power(kw)	Current(A)	Capacity(kw)	Power(kw)	Current(A)
160Hz	-40	1.60	1.86	3.80	1.45	1.97	4.03	1.36	2.10	4.28
	-35	2.01	2.00	4.08	1.85	2.14	4.36	1.70	2.26	4.60
	-30	2.41	2.14	4.36	2.26	2.30	4.66	2.07	2.42	4.90
	-25	2.98	2.30	4.67	2.79	2.45	4.95	2.45	2.58	5.19
	-20	3.56	2.49	5.02	3.32	2.63	5.29	2.89	2.80	5.62
	-15	4.29	2.65	5.33	3.90	2.84	5.69	3.51	3.00	6.00
	-10	5.03	2.83	5.67	4.56	3.03	6.05	4.16	3.23	6.41
	-5	6.24	3.00	6.00	5.72	3.25	6.47	5.49	3.48	6.89
120Hz	-40	1.23	1.42	2.94	1.15	1.52	3.14	1.05	1.61	3.33
	-35	1.55	1.51	3.11	1.42	1.61	3.32	1.29	1.71	3.53
	-30	1.93	1.61	3.32	1.75	1.71	3.53	1.59	1.81	3.74
	-25	2.30	1.70	3.51	2.16	1.82	3.75	2.02	1.94	3.98
	-20	2.83	1.81	3.71	2.58	1.93	3.96	2.38	2.06	4.21
	-15	3.39	1.91	3.91	3.10	2.06	4.20	2.85	2.19	4.47
	-10	3.90	2.01	4.10	3.64	2.17	4.42	3.38	2.32	4.71
	-5	5.06	2.10	4.28	4.72	2.29	4.66	4.27	2.46	4.97
80Hz	-40	0.83	1.02	2.12	0.73	1.09	2.25	0.72	1.16	2.41
	-35	1.03	1.06	2.21	0.97	1.14	2.38	0.92	1.22	2.53
	-30	1.29	1.12	2.33	1.20	1.21	2.51	1.13	1.28	2.66
	-25	1.58	1.17	2.45	1.47	1.27	2.63	1.37	1.35	2.79
	-20	1.92	1.23	2.55	1.75	1.32	2.74	1.63	1.41	2.92
	-15	2.33	1.29	2.68	2.08	1.38	2.88	1.92	1.48	3.06
	-10	2.76	1.33	2.77	2.52	1.46	3.03	2.35	1.56	3.23
	-5	3.54	1.37	2.84	3.27	1.51	3.13	3.03	1.63	3.37
50Hz	-40	0.45	0.75	1.56	0.43	0.81	1.69	0.40	0.87	1.82
	-35	0.63	0.77	1.59	0.59	0.84	1.75	0.54	0.89	1.87
	-30	0.80	0.79	1.66	0.75	0.86	1.80	0.73	0.92	1.94
	-25	0.98	0.82	1.71	0.89	0.89	1.86	0.84	0.96	2.01
	-20	1.20	0.85	1.77	1.13	0.93	1.95	1.09	1.00	2.11
	-15	1.45	0.88	1.82	1.36	0.96	2.00	1.27	1.05	2.20
	-10	1.73	0.90	1.87	1.55	1.01	2.10	1.40	1.09	2.28
	-5	2.21	0.92	1.92	2.03	1.02	2.14	1.91	1.12	2.34

List of Capacity

8. OCU-NR450DSF Low & medium temperature inverter unit										
R404A										
LT MT Inverter Ambient Temp.: -25°C ~ +48°C Evaporative Temp.: -40°C ~ -5°C Power supply: 3Φ380V 50Hz										
Frequency	Evaporative Temp.: (°C)	Ambient Temp.: 32°C			Ambient Temp.: 38°C			Ambient Temp.: 43°C		
		Capacity(kw)	Power(kw)	Current(A)	Capacity(kw)	Power(kw)	Current(A)	Capacity(kw)	Power(kw)	Current(A)
180Hz	-40	2.45	2.78	5.43	2.06	2.99	5.75	—	—	—
	-35	2.80	2.93	5.66	2.50	3.14	5.95	2.34	3.41	6.37
	-30	3.52	3.16	6.01	3.18	3.38	6.34	2.88	3.59	6.67
	-25	4.30	3.41	6.40	3.93	3.66	6.77	3.56	3.86	7.08
	-20	5.50	3.63	6.75	4.88	3.94	7.21	4.53	4.15	7.51
	-15	6.74	3.92	7.21	6.03	4.19	7.60	5.50	4.42	7.96
	-10	7.89	4.10	7.48	7.19	4.46	8.05	6.43	4.71	8.40
	-5	9.78	4.32	7.83	8.96	4.68	8.37	8.33	4.94	8.26
160Hz	-40	2.14	2.48	4.98	1.85	2.66	5.28	1.85	2.84	5.55
	-35	2.67	2.61	5.18	2.43	2.82	5.52	2.17	3.00	5.77
	-30	3.37	2.83	5.54	3.04	3.02	5.84	2.75	3.20	6.10
	-25	4.13	3.03	5.89	3.66	3.24	6.19	3.29	3.44	6.50
	-20	4.94	3.22	6.18	4.55	3.46	6.55	4.21	3.67	6.86
	-15	6.05	3.38	6.42	5.45	3.63	6.82	4.91	3.90	7.22
	-10	7.14	3.53	6.68	6.59	3.84	7.14	5.89	4.09	7.50
	-5	9.02	3.69	6.90	8.23	4.01	7.39	7.72	4.30	7.42
120Hz	-40	1.66	1.93	4.00	1.54	2.07	4.30	1.48	2.21	4.58
	-35	2.15	2.03	4.20	2.03	2.18	4.50	1.82	2.33	4.81
	-30	2.68	2.15	4.47	2.44	2.31	4.77	2.23	2.47	5.06
	-25	3.26	2.25	4.67	3.09	2.44	5.01	2.76	2.57	5.23
	-20	4.08	2.36	4.89	3.74	2.55	5.21	3.34	2.72	5.47
	-15	4.98	2.46	5.06	4.48	2.66	5.38	4.05	2.85	5.68
	-10	5.88	2.56	5.24	5.31	2.78	5.57	4.79	2.96	5.85
	-5	7.29	2.63	5.35	6.65	2.90	5.77	6.06	3.13	6.49
80Hz	-40	1.12	1.40	2.90	1.03	1.54	3.23	0.92	1.64	3.45
	-35	1.43	1.46	3.04	1.31	1.58	3.30	1.21	1.68	3.54
	-30	1.80	1.53	3.16	1.65	1.65	3.44	1.55	1.76	3.70
	-25	2.24	1.58	3.29	2.02	1.71	3.58	1.88	1.82	3.83
	-20	2.69	1.65	3.45	2.45	1.78	3.73	2.31	1.88	3.95
	-15	3.24	1.71	3.57	2.94	1.85	3.89	2.69	1.98	4.17
	-10	3.79	1.74	3.66	3.49	1.91	4.01	3.19	2.05	4.33
	-5	4.85	1.78	3.74	4.42	1.97	4.14	4.15	2.11	4.45
50Hz	-40	0.68	1.07	2.18	0.61	1.17	2.41	0.58	1.25	2.62
	-35	0.92	1.10	2.26	0.81	1.19	2.48	0.77	1.28	2.68
	-30	1.14	1.13	2.31	1.05	1.21	2.51	0.98	1.30	2.71
	-25	1.42	1.15	2.35	1.25	1.25	2.60	1.19	1.34	2.80
	-20	1.66	1.18	2.45	1.57	1.28	2.68	1.44	1.39	2.91
	-15	2.08	1.19	2.47	1.90	1.30	2.70	1.76	1.41	2.97
	-10	2.49	1.21	2.50	2.24	1.32	2.78	2.02	1.43	3.02
	-5	3.16	1.22	2.51	2.90	1.34	2.80	2.69	1.47	3.10

List of Capacity

9、OCU-NR600DSF Low & medium temperature inverter unit										
R404A										
LT MT Inverter Ambient Temp.: -25°C ~ +48°C Evaporative Temp.: -40°C ~ -5°C Power supply: 3Φ380V 50Hz										
Frequency	Evaporative Temp.: (°C)	Ambient Temp.: 32°C			Ambient Temp.: 38°C			Ambient Temp.: 43°C		
		Capacity(kw)	Power(kw)	Current(A)	Capacity(kw)	Power(kw)	Current(A)	Capacity(kw)	Power(kw)	Current(A)
180Hz	-40	3.86	3.67	7.75	3.45	3.98	8.35	3.22	4.29	8.91
	-35	4.67	3.72	7.87	4.59	4.13	8.60	4.20	4.46	9.19
	-30	6.11	4.08	8.55	5.64	4.37	9.04	5.19	4.57	9.40
	-25	7.59	4.47	9.23	6.97	4.74	9.68	6.46	5.01	10.11
	-20	8.73	4.92	10.01	7.98	5.25	10.54	7.33	5.47	10.91
	-15	11.01	5.36	10.71	10.17	5.64	11.18	9.19	6.03	11.82
	-10	12.59	5.68	11.24	11.54	6.20	12.10	10.43	6.55	12.68
	-5	15.69	6.29	12.20	14.51	6.71	12.88	13.49	7.13	13.65
	0	17.39	6.61	12.81	15.96	7.01	13.44	14.35	7.49	14.29
	5	19.78	7.20	13.75	17.96	7.83	14.88	16.71	8.29	15.81
140Hz	-40	2.73	2.58	5.55	2.63	2.83	6.06	2.47	3.15	6.74
	-35	3.58	2.79	6.00	3.29	3.09	6.63	3.13	3.39	7.23
	-30	4.60	3.00	6.42	4.18	3.20	6.85	3.92	3.36	7.18
	-25	5.80	3.21	6.86	5.15	3.45	7.38	4.75	3.62	7.72
	-20	6.82	3.45	7.36	6.20	3.69	7.88	5.72	3.90	8.23
	-15	8.60	3.67	7.83	7.73	3.96	8.39	7.11	4.20	8.76
	-10	9.81	3.88	8.22	9.05	4.16	8.73	8.18	4.46	9.22
	-5	12.47	4.10	8.59	11.43	4.41	9.13	10.39	4.72	9.62
	0	14.31	4.40	9.13	13.04	4.74	9.70	12.00	5.08	10.22
	5	16.05	4.63	9.49	14.69	5.00	10.10	13.34	5.37	10.76
100Hz	-40	2.01	1.91	4.40	1.85	2.03	4.35	1.70	2.15	4.63
	-35	2.51	1.94	4.19	2.33	2.05	4.43	2.11	2.25	4.85
	-30	3.19	2.08	4.50	2.88	2.21	4.78	2.80	2.33	5.04
	-25	3.94	2.23	4.80	3.69	2.36	5.10	3.35	2.52	5.45
	-20	4.93	2.36	5.11	4.50	2.54	5.48	4.15	2.68	5.80
	-15	5.98	2.50	5.41	5.43	2.70	5.84	5.05	2.86	6.18
	-10	7.04	2.64	5.68	6.40	2.86	6.14	5.92	3.03	6.52
	-5	8.79	2.75	5.92	8.15	2.98	6.41	7.53	3.19	6.87
	0	10.28	2.83	6.08	9.37	3.11	6.68	8.68	3.35	7.18
	5	12.45	2.97	6.37	11.46	3.26	7.00	10.53	3.53	7.54
50Hz	-40	0.88	1.02	2.16	0.78	1.07	2.25	0.74	1.09	2.33
	-35	1.16	1.10	2.32	1.02	1.15	2.44	0.94	1.18	2.52
	-30	1.44	1.18	2.50	1.33	1.22	2.62	1.22	1.28	2.74
	-25	1.87	1.25	2.66	1.72	1.30	2.79	1.65	1.37	2.93
	-20	2.35	1.31	2.80	2.15	1.38	2.96	1.97	1.45	3.13
	-15	2.95	1.36	2.92	2.63	1.45	3.12	2.44	1.53	3.31
	-10	3.55	1.42	3.05	3.19	1.51	3.25	2.89	1.61	3.47
	-5	4.47	1.47	3.15	4.13	1.56	3.36	3.82	1.67	3.62
	0	5.35	1.46	3.13	4.93	1.60	3.44	4.54	1.72	3.73
	5	6.32z	1.47	3.15	5.70	1.63	3.52	5.29	1.76	3.80

List of Capacity

10、Low & medium temperature scroll EVI unit										
R22										
LT MT Ambient Temp.: -7°C ~ +43°C Evaporative Temp.: -40°C ~ -5°C Power supply: 1Φ220V 50Hz										
Model	Evaporative Temp.: (°C)	Ambient Temp.: 32°C			Ambient Temp.: 38°C			Ambient Temp.: 43°C		
		Capacity(kw)	Power(kw)	Current(A)	Capacity(kw)	Power(kw)	Current(A)	Capacity(kw)	Power(kw)	Current(A)
UF-RH860SFJ	-40	0.35	0.59	3.29	0.32	0.64	3.51	0.31	0.68	3.72
	-35	0.44	0.63	3.39	0.41	0.69	3.62	0.39	0.74	3.84
	-30	0.56	0.68	3.50	0.52	0.74	3.75	0.49	0.79	3.97
	-25	0.71	0.73	3.63	0.65	0.79	3.88	0.62	0.85	4.11
	-20	0.89	0.78	3.76	0.82	0.85	4.02	0.78	0.91	4.26
	-15	1.10	0.83	3.90	1.01	0.90	4.17	0.96	0.97	4.42
	-10	1.34	0.89	4.05	1.24	0.96	4.33	1.17	1.04	4.59
	-5	1.60	0.94	4.21	1.48	1.03	4.50	1.40	1.10	4.77
UF-RH1160SFJ	-40	0.58	0.64	6.37	0.53	0.70	6.81	0.51	0.75	7.21
	-35	0.78	0.70	6.42	0.72	0.76	6.86	0.69	0.82	7.27
	-30	1.01	0.77	6.50	0.93	0.83	6.95	0.88	0.90	7.36
	-25	1.25	0.84	6.61	1.15	0.92	7.06	1.09	0.98	7.48
	-20	1.51	0.93	6.74	1.39	1.01	7.21	1.32	1.09	7.63
	-10	2.08	1.13	7.09	1.92	1.23	7.58	1.82	1.32	8.03
-5	2.40	1.25	7.30	2.21	1.36	7.80	2.10	1.46	8.27	

11、中低温涡旋喷液机组										
R22										
LT MT Ambient Temp.: -7°C ~ +43°C Evaporative Temp.: -40°C ~ -5°C Power supply: 3Φ380V 50Hz										
Model	Evaporative Temp.: (°C)	Ambient Temp.: 32°C			Ambient Temp.: 38°C			Ambient Temp.: 43°C		
		Capacity(kw)	Power(kw)	Current(A)	Capacity(kw)	Power(kw)	Current(A)	Capacity(kw)	Power(kw)	Current(A)
UF-RH1580SFJ	-40	0.91	1.32	2.77	0.84	1.44	2.96	0.80	1.54	3.14
	-35	1.19	1.36	2.83	1.10	1.48	3.03	1.04	1.59	3.20
	-30	1.48	1.44	2.86	1.36	1.57	3.06	1.30	1.68	3.24
	-25	1.88	1.54	2.93	1.73	1.68	3.13	1.65	1.80	3.32
	-20	2.29	1.62	3.01	2.11	1.76	3.22	2.01	1.89	3.41
	-15	2.74	1.72	3.09	2.53	1.87	3.30	2.40	2.01	3.50
	-10	3.23	1.82	3.20	2.98	1.98	3.42	2.83	2.13	3.62
	-5	3.77	1.94	3.33	3.48	2.11	3.56	3.30	2.27	3.77

12、Low temperature scroll EVI unit										
R22										
LT Ambient Temp.: -7°C ~ +43°C Evaporative Temp.: -40°C ~ -20°C Power supply: 3Φ380V 50Hz										
Model	Evaporative Temp.: (°C)	Ambient Temp.: 32°C			Ambient Temp.: 38°C			Ambient Temp.: 43°C		
		Capacity(kw)	Power(kw)	Current(A)	Capacity(kw)	Power(kw)	Current(A)	Capacity(kw)	Power(kw)	Current(A)
UF-RH2280LFJ	-40	1.12	1.20	3.36	1.03	1.31	3.59	0.98	1.40	3.81
	-35	1.39	1.29	3.50	1.28	1.40	3.74	1.22	1.51	3.96
	-30	1.76	1.39	3.71	1.62	1.51	3.97	1.54	1.63	4.20
	-25	2.21	1.53	3.96	2.04	1.67	4.23	1.94	1.79	4.48
	-20	2.75	1.70	4.23	2.54	1.85	4.52	2.41	1.99	4.79

List of Capacity

List of Capacity

13. Low & medium temperature scroll EVI unit										
R404A										
LT MT Ambient Temp.: -7°C ~ +43°C Evaporative Temp.: -45°C ~ -5°C Power supply: 1Φ220V 50Hz										
Model	Evaporative Temp.: (°C)	Ambient Temp.: 32°C			Ambient Temp.: 38°C			Ambient Temp.: 43°C		
		Capacity(kw)	Power(kw)	Current(A)	Capacity(kw)	Power(kw)	Current(A)	Capacity(kw)	Power(kw)	Current(A)
UF-NRH860SFJ	-45	0.27	0.67	3.25	0.24	0.73	3.47	0.23	0.78	3.68
	-40	0.43	0.70	3.37	0.39	0.76	3.60	0.37	0.82	3.82
	-35	0.59	0.73	3.44	0.54	0.79	3.68	0.52	0.85	3.90
	-30	0.71	0.75	3.53	0.65	0.82	3.77	0.62	0.88	4.00
	-25	0.91	0.78	3.64	0.84	0.85	3.89	0.80	0.92	4.12
	-20	0.96	0.81	3.78	0.89	0.88	4.04	0.84	0.94	4.28
	-15	1.23	0.84	3.93	1.14	0.92	4.20	1.08	0.98	4.45
	-10	1.40	0.87	4.09	1.29	0.95	4.37	1.22	1.02	4.63
	-5	1.56	0.91	4.29	1.44	0.99	4.59	1.37	1.06	4.86
UF-NRH1160SFJ	-45	0.46	0.99	6.43	0.45	1.05	6.57	0.41	1.10	6.70
	-40	0.61	1.03	6.53	0.53	1.09	6.68	0.49	1.14	6.81
	-35	0.79	1.07	6.65	0.65	1.13	6.81	0.58	1.18	6.94
	-30	0.98	1.12	6.78	0.79	1.18	6.96	0.69	1.23	7.08
	-25	1.20	1.17	6.93	0.98	1.23	7.13	0.81	1.28	7.25
	-20	1.44	1.23	7.09	1.19	1.29	7.32	0.96	1.33	7.43
	-15	1.71	1.28	7.27	1.44	1.35	7.52	1.12	1.39	7.64
	-10	1.99	1.34	7.47	1.72	1.42	7.75	1.30	1.45	7.86
	-5	2.30	1.40	7.69	2.03	1.49	7.99	1.50	1.52	8.10

15. OCU-CR300DQSF Low & medium temperature inverter unit										
R410A										
Frequency	Evaporative Temp.: (°C)	Ambient Temp.: 32°C			Ambient Temp.: 38°C			Ambient Temp.: 43°C		
		Capacity(kw)	Power(kw)	Current(A)	Capacity(kw)	Power(kw)	Current(A)	Capacity(kw)	Power(kw)	Current(A)
90HZ	-30	0.98	0.90	2.58	0.92	1.00	2.71	0.88	1.08	2.83
	-25	1.23	0.92	2.60	1.19	1.04	2.76	1.13	1.13	2.90
	-20	1.53	0.97	2.68	1.41	1.10	2.86	1.37	1.18	2.97
	-15	1.92	1.00	2.72	1.67	1.12	2.89	1.57	1.24	3.05
	-10	2.25	1.02	2.74	2.12	1.16	2.94	1.98	1.28	3.12
	-5	2.76	1.04	2.77	2.64	1.19	2.99	2.53	1.31	3.16
	0	3.22	1.05	2.79	3.08	1.20	3.00	2.96	1.35	3.21
	5	3.75	1.05	2.79	3.58	1.22	3.02	3.44	1.35	3.22
	150HZ	-30	1.76	1.38	3.26	1.65	1.53	3.49	1.62	1.70
-25		2.28	1.48	3.41	2.07	1.63	3.64	1.98	1.78	3.87
-20		2.70	1.53	3.48	2.46	1.71	3.76	2.41	1.88	4.01
-15		3.25	1.60	3.58	2.96	1.76	3.84	2.86	1.94	4.09
-10		3.77	1.64	3.63	3.65	1.83	3.93	3.48	2.02	4.22
-5		4.62	1.68	3.70	4.34	1.88	4.01	4.13	2.08	4.31
0		5.44	1.76	3.83	5.15	1.93	4.10	4.84	2.20	4.50
5		6.09	1.74	3.80	5.91	1.97	4.16	5.58	2.25	4.58
210HZ		-30	2.49	1.97	4.13	2.36	2.17	4.46	2.20	2.35
	-25	3.31	2.08	4.32	3.01	2.29	4.64	2.59	2.51	4.98
	-20	3.90	2.19	4.47	3.51	2.37	4.78	3.32	2.60	5.12
	-15	4.51	2.26	4.60	4.16	2.50	4.96	4.00	2.71	5.29
	-10	5.34	2.37	4.75	5.11	2.62	5.15	4.62	2.83	5.48
	-5	6.28	2.45	4.87	5.91	2.70	5.27	5.66	2.88	5.55
	0	7.36	2.59	5.12	6.97	2.85	5.52	6.66	3.12	5.96
	5	8.82	2.95	5.68	8.32	3.10	5.90	7.80	3.38	6.36
	270HZ	-30	3.12	2.60	5.11	2.98	2.87	5.55	2.72	3.15
-25		3.83	2.75	5.37	3.58	3.08	5.88	3.32	3.31	6.25
-20		4.68	2.89	5.58	4.27	3.21	6.09	3.98	3.48	6.51
-15		5.39	3.04	5.81	5.15	3.39	6.37	4.67	3.73	6.92
-10		6.48	3.35	6.31	6.04	3.65	6.79	5.79	3.94	7.25
-5		7.41	3.58	6.65	7.17	3.86	7.11	6.79	4.20	7.67
0		8.54	3.97	7.29	8.12	4.19	7.64	7.76	4.56	8.21
5		11.03	4.39	7.96	9.78	4.61	8.29	8.94	4.86	8.69

14. Low & medium temperature scroll EVI unit										
R404A										
LT MT Ambient Temp.: -7°C ~ +43°C Evaporative Temp.: -45°C ~ -5°C Power supply: 3Φ380V 50Hz										
Model	Evaporative Temp.: (°C)	Ambient Temp.: 32°C			Ambient Temp.: 38°C			Ambient Temp.: 43°C		
		Capacity(kw)	Power(kw)	Current(A)	Capacity(kw)	Power(kw)	Current(A)	Capacity(kw)	Power(kw)	Current(A)
UF-NRH1580SFJ	-45	0.74	1.02	2.51	0.69	1.11	2.69	0.65	1.20	2.84
	-40	0.88	1.09	2.56	0.81	1.19	2.74	0.77	1.27	2.90
	-35	1.07	1.16	2.63	0.99	1.26	2.81	0.94	1.36	2.97
	-30	1.32	1.24	2.70	1.22	1.34	2.89	1.16	1.44	3.06
	-25	1.62	1.31	2.79	1.50	1.43	2.98	1.42	1.53	3.15
	-20	1.98	1.39	2.88	1.83	1.52	3.08	1.74	1.63	3.26
	-15	2.40	1.48	2.99	2.21	1.61	3.20	2.10	1.73	3.39
	-10	2.87	1.56	3.11	2.65	1.70	3.32	2.51	1.83	3.52
	-5	3.40	1.65	3.24	3.14	1.80	3.46	2.98	1.93	3.67

List of Capacity

List of Capacity

16、OCU-CR400DQSF Low & medium temperature inverter unit										
Frequency	Evaporative Temp. (°C)	Ambient Temp.: 32°C			Ambient Temp.: 38°C			Ambient Temp.: 43°C		
		Capacity(kw)	Power(kw)	Current(A)	Capacity(kw)	Power(kw)	Current(A)	Capacity(kw)	Power(kw)	Current(A)
60HZ	-30	1.09	1.00	2.75	1.02	1.11	2.90	0.97	1.20	3.03
	-25	1.37	1.02	2.78	1.32	1.15	2.96	1.26	1.26	3.11
	-20	1.70	1.08	2.87	1.57	1.22	3.06	1.53	1.32	3.19
	-15	2.13	1.11	2.91	1.86	1.24	3.09	1.74	1.37	3.28
	-10	2.49	1.13	2.93	2.36	1.29	3.16	2.20	1.42	3.35
	-5	3.06	1.15	2.96	2.93	1.32	3.21	2.81	1.45	3.40
	0	3.57	1.16	2.98	3.42	1.34	3.22	3.29	1.50	3.46
	5	4.16	1.17	2.99	3.98	1.35	3.24	3.81	1.50	3.46
100HZ	-30	1.95	1.53	3.51	1.83	1.70	3.76	1.79	1.88	4.04
	-25	2.53	1.64	3.67	2.29	1.81	3.93	2.20	1.98	4.19
	-20	2.99	1.70	3.76	2.74	1.90	4.06	2.67	2.09	4.35
	-15	3.60	1.78	3.86	3.28	1.96	4.15	3.18	2.15	4.43
	-10	4.19	1.82	3.91	4.05	2.03	4.25	3.86	2.24	4.58
	-5	5.13	1.87	3.99	4.82	2.08	4.35	4.59	2.31	4.67
	0	6.04	1.96	4.14	5.72	2.15	4.44	5.38	2.44	4.88
	5	6.75	1.93	4.11	6.56	2.19	4.51	6.19	2.50	4.97
140HZ	-30	2.76	2.19	4.48	2.62	2.41	4.84	2.44	2.61	5.15
	-25	3.67	2.31	4.68	3.34	2.54	5.04	2.88	2.79	5.42
	-20	4.33	2.43	4.85	3.90	2.63	5.19	3.69	2.88	5.57
	-15	5.00	2.51	4.99	4.61	2.77	5.40	4.44	3.00	5.77
	-10	5.92	2.63	5.16	5.67	2.91	5.61	5.13	3.14	5.98
	-5	6.96	2.71	5.30	6.56	3.00	5.74	6.29	3.20	6.05
	0	8.17	2.87	5.57	7.74	3.16	6.02	7.40	3.46	6.51
	5	9.78	3.27	6.19	9.23	3.44	6.44	8.66	3.75	6.94
180HZ	-30	3.46	2.88	5.56	3.31	3.19	6.05	3.02	3.50	6.55
	-25	4.25	3.06	5.84	3.97	3.41	6.41	3.68	3.68	6.82
	-20	5.19	3.20	6.08	4.74	3.56	6.65	4.41	3.86	7.11
	-15	5.98	3.37	6.34	5.71	3.76	6.96	5.18	4.14	7.57
	-10	7.19	3.72	6.89	6.70	4.05	7.42	6.42	4.37	7.93
	-5	8.22	3.97	7.27	7.96	4.28	7.78	7.54	4.66	8.40
	0	9.48	4.40	7.98	9.02	4.65	8.37	8.61	5.06	9.00
	5	12.24	4.87	8.72	10.86	5.12	9.09	9.92	5.39	9.53

17、OCU-CR600DQSF Low & medium temperature inverter unit										
Frequency	Evaporative Temp. (°C)	Ambient Temp.: 32°C			Ambient Temp.: 38°C			Ambient Temp.: 43°C		
		Capacity(kw)	Power(kw)	Current(A)	Capacity(kw)	Power(kw)	Current(A)	Capacity(kw)	Power(kw)	Current(A)
60HZ	-30	1.93	1.76	3.10	1.80	1.96	3.36	1.72	2.12	3.59
	-25	2.42	1.80	3.14	2.34	2.03	3.46	2.22	2.22	3.73
	-20	3.01	1.91	3.30	2.77	2.15	3.64	2.70	2.32	3.87
	-15	3.77	1.97	3.38	3.28	2.20	3.70	3.08	2.42	4.02
	-10	4.41	1.99	3.41	4.16	2.28	3.81	3.88	2.52	4.16
	-5	5.41	2.04	3.47	5.17	2.34	3.9	4.97	2.57	4.24
	0	6.30	2.06	3.50	6.05	2.36	3.93	5.81	2.64	4.34
	5	7.36	2.07	3.51	7.03	2.38	3.96	6.74	2.65	4.35
100HZ	-30	3.45	2.71	4.44	3.23	3.01	4.88	3.17	3.33	5.37
	-25	4.47	2.90	4.72	4.05	3.20	5.17	3.89	3.50	5.63
	-20	5.28	3.00	4.87	4.83	3.36	5.41	4.72	3.69	5.91
	-15	6.37	3.14	5.05	5.80	3.46	5.56	5.61	3.80	6.1
	-10	7.40	3.21	5.15	7.15	3.58	5.75	6.82	3.97	6.32
	-5	9.06	3.30	5.29	8.52	3.68	5.91	8.11	4.08	6.49
	0	10.67	3.45	5.54	10.10	3.79	6.08	9.50	4.31	6.86
	5	11.93	3.41	5.49	11.60	3.87	6.2	10.94	4.42	7.02
140HZ	-30	4.88	3.87	6.14	4.62	4.26	6.79	4.31	4.62	7.34
	-25	6.48	4.08	6.50	5.90	4.48	7.13	5.08	4.92	7.81
	-20	7.65	4.29	6.81	6.89	4.65	7.41	6.51	5.09	8.07
	-15	8.83	4.44	7.05	8.15	4.90	7.77	7.84	5.31	8.42
	-10	10.46	4.65	7.35	10.03	5.14	8.14	9.06	5.55	8.79
	-5	12.30	4.80	7.59	11.59	5.29	8.37	11.11	5.65	8.93
	0	14.44	5.08	8.07	13.67	5.58	8.87	13.07	6.12	9.73
	5	17.29	5.78	9.17	16.31	6.08	9.61	15.30	6.63	10.50
180HZ	-30	6.11	5.09	8.06	5.84	5.63	8.93	5.33	6.19	9.80
	-25	7.51	5.40	8.56	7.01	6.03	9.56	6.50	6.50	10.29
	-20	9.17	5.66	8.98	8.38	6.29	9.98	7.80	6.82	10.80
	-15	10.56	5.96	9.43	10.09	6.64	10.53	9.15	7.32	11.61
	-10	12.70	6.57	10.41	11.84	7.16	11.35	11.35	7.72	12.25
	-5	14.53	7.01	11.08	14.06	7.57	11.98	13.32	8.23	13.07
	0	16.75	7.78	12.34	15.93	8.22	13.02	15.22	8.94	14.14
	5	21.62	8.60	13.64	19.18	9.04	14.30	17.53	9.52	15.07

List of Capacity

21、OCU-CS1000VSF Low & medium temperature inverter unit R410A

Frequency	Evaporative Temp. (°C)	Condensing Temp.: 35°C			Condensing Temp.: 40°C			Condensing Temp.: 45°C			Condensing Temp.: 50°C		
		Capacity(kw)	Power(kw)	Current(A)	Capacity(kw)	Power(kw)	Current(A)	Capacity(kw)	Power(kw)	Current(A)	Capacity(kw)	Power(kw)	Current(A)
25Hz	-45	2.61	4.17	20.42	2.45	4.44	21.02	2.27	4.77	21.72	2.11	5.10	22.32
	-40	2.87	4.14	20.87	2.70	4.44	21.47	2.51	4.79	22.07	2.33	5.18	22.67
	-30	4.22	4.07	21.82	3.98	4.42	22.32	3.70	4.85	22.92	3.45	5.31	23.52
	-20	6.65	3.95	22.67	6.27	4.37	23.17	5.86	4.87	23.37	5.47	5.42	24.27
	-15	8.37	3.85	22.72	7.82	4.33	23.22	7.31	4.88	23.60	6.81	5.49	24.52
	-10	10.28	3.76	22.77	9.62	4.28	23.27	8.99	4.88	23.77	8.38	5.54	24.70
50Hz	-45	4.89	6.50	21.40	4.44	7.06	22.00	4.02	7.69	22.70	3.64	8.37	23.30
	-40	5.50	6.72	22.30	5.14	7.29	22.90	4.79	7.92	23.50	4.46	8.62	24.10
	-30	8.11	7.20	23.80	7.72	7.78	24.30	7.36	8.43	24.90	7.01	9.13	25.50
	-20	12.51	7.72	25.10	11.89	8.31	25.60	11.30	8.96	26.10	10.73	9.67	26.70
	-15	15.40	7.99	25.70	14.57	8.59	26.20	13.79	9.25	26.70	13.04	9.96	27.20
	-10	18.74	8.28	26.20	17.65	8.88	26.70	16.62	9.54	27.10	15.64	10.25	27.60
70Hz	-45	6.69	8.37	22.18	6.03	9.15	22.78	5.42	10.02	23.48	4.87	10.99	24.08
	-40	7.59	8.79	23.03	7.09	9.57	23.63	6.61	10.43	24.23	6.17	11.37	24.83
	-30	11.18	9.71	25.28	10.72	10.47	25.78	10.28	11.30	26.38	9.85	12.19	26.98
	-20	17.15	10.74	27.03	16.38	11.46	27.53	15.65	12.23	28.03	14.94	13.07	28.63
	-15	21.03	11.30	28.18	19.98	12.00	28.68	18.98	12.74	29.18	18.02	13.53	29.68
	-10	25.51	11.89	29.13	24.08	12.56	29.63	22.73	13.27	30.03	21.45	14.02	30.53
-5	30.58	12.52	30.18	28.69	13.15	30.58	26.90	13.81	30.98	25.24	14.52	31.48	

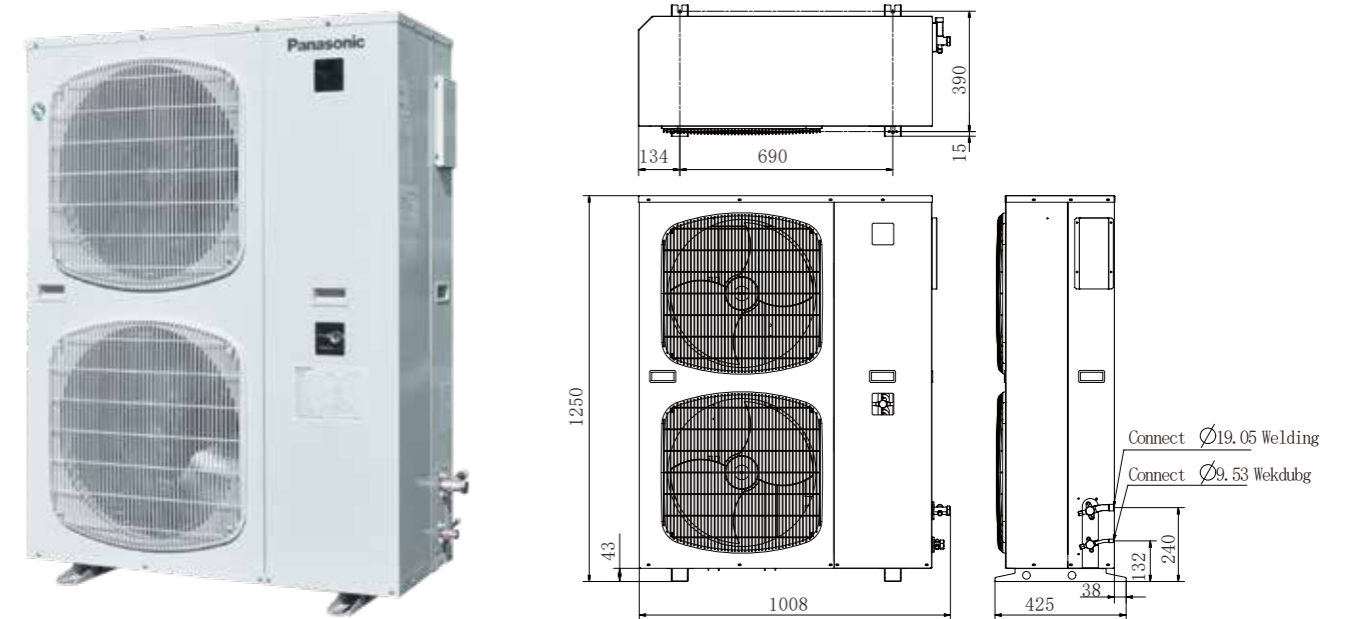
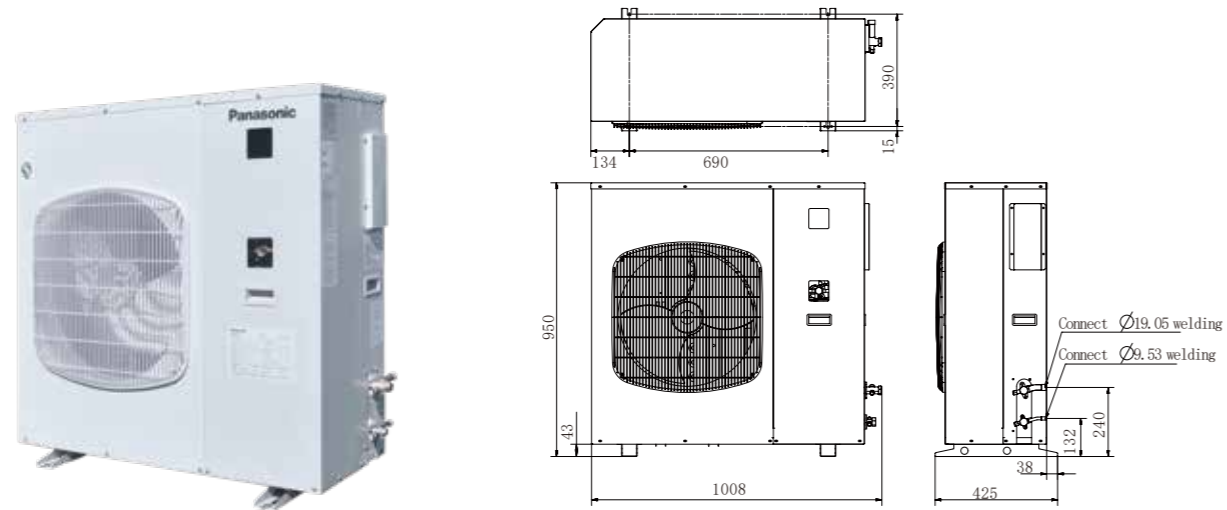
22、OCU-CS1500VSF Low & medium temperature inverter unit R410A

Frequency	Evaporative Temp. (°C)	Condensing Temp.: 35°C			Condensing Temp.: 40°C			Condensing Temp.: 45°C			Condensing Temp.: 50°C		
		Capacity(kw)	Power(kw)	Current(A)	Capacity(kw)	Power(kw)	Current(A)	Capacity(kw)	Power(kw)	Current(A)	Capacity(kw)	Power(kw)	Current(A)
25Hz	-45	2.67	4.22	20.42	2.47	4.49	21.02	2.29	4.82	21.72	2.13	5.15	22.32
	-40	2.93	4.19	20.87	2.73	4.49	21.47	2.54	4.84	22.07	2.35	5.23	22.67
	-30	4.31	4.12	21.82	4.02	4.47	22.32	3.74	4.90	22.92	3.49	5.36	23.52
	-20	6.78	4.00	22.67	6.34	4.42	23.17	5.92	4.92	23.37	5.52	5.47	24.27
	-15	8.45	3.90	22.72	7.90	4.38	23.22	7.38	4.93	23.60	6.88	5.54	24.52
	-10	10.39	3.81	22.77	9.71	4.33	23.27	9.08	4.93	23.77	8.47	5.59	24.70
50Hz	-45	4.94	6.55	21.40	4.48	7.11	22.00	4.06	7.74	22.70	3.68	8.42	23.30
	-40	5.56	6.77	22.30	5.19	7.34	22.90	4.84	7.97	23.50	4.51	8.67	24.10
	-30	8.19	7.25	23.80	7.80	7.83	24.30	7.43	8.48	24.90	7.08	9.18	25.50
	-20	12.64	7.77	25.10	12.01	8.36	25.60	11.41	9.01	26.10	10.84	9.72	26.70
	-15	15.56	8.04	25.70	14.72	8.64	26.20	13.93	9.30	26.70	13.17	10.01	27.20
	-10	18.93	8.33	26.20	17.83	8.93	26.70	16.79	9.59	27.10	15.80	10.30	27.60
75Hz	-45	7.22	8.88	22.38	6.49	9.73	22.98	5.83	10.66	23.68	5.23	11.70	24.28
	-40	8.19	9.35	23.73	7.65	10.19	24.33	7.14	11.10	24.93	6.67	12.11	25.53
	-30	12.07	10.38	25.78	11.58	11.19	26.28	11.12	12.06	26.88	10.67	13.01	27.48
	-20	18.50	11.55	27.53	17.69	12.30	28.03	16.90	13.10	28.53	16.16	13.97	29.13
	-15	22.67	12.18	28.68	21.55	12.90	29.18	20.48	13.67	29.68	19.46	14.48	30.18
	-10	27.47	12.85	29.63	25.95	13.53	30.13	24.50	14.25	30.53	23.13	15.01	31.03
-5	32.92	13.55	30.68	30.89	14.19	31.08	28.97	14.86	31.48	27.18	15.56	31.98	

List of Capacity

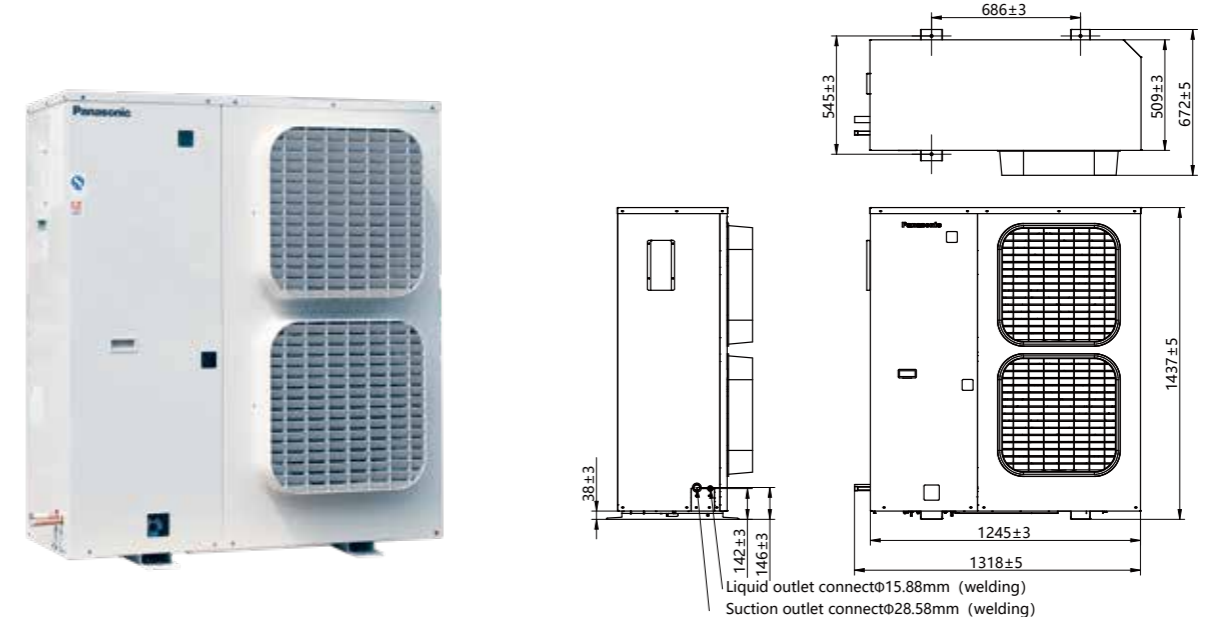
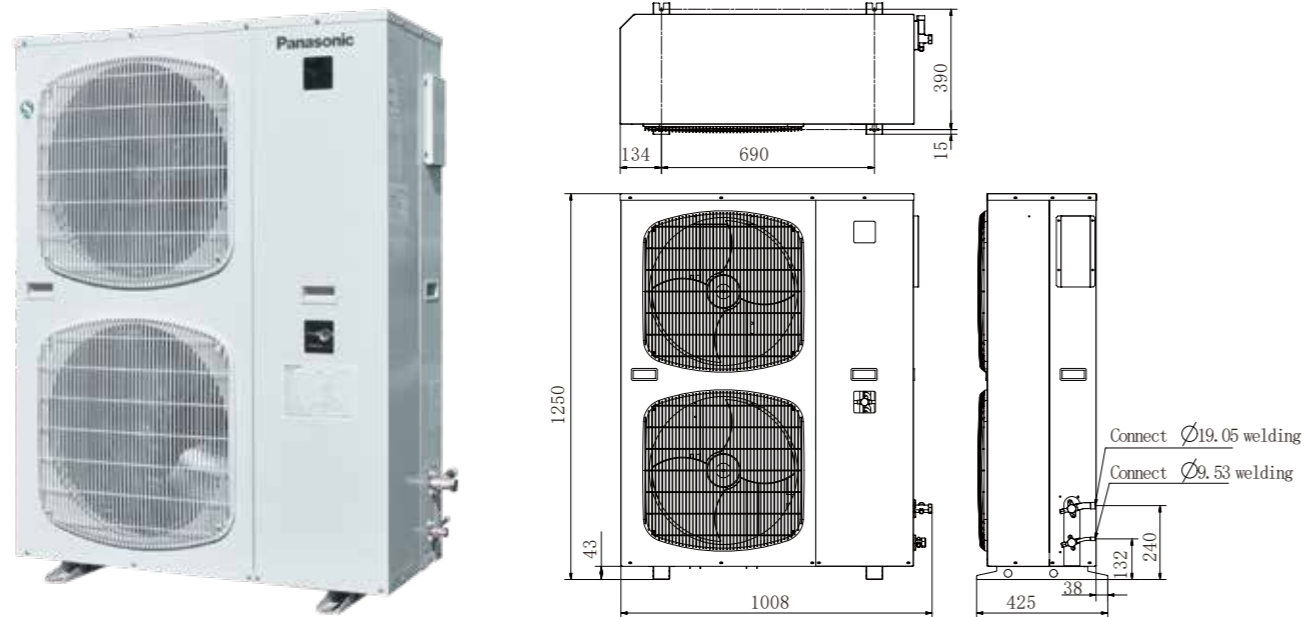
23、OCU-CS2000VS2F Low & medium temperature inverter unit R410A

Frequency	Evaporative Temp. (°C)	Condensing Temp.: 35°C			Condensing Temp.: 40°C			Condensing Temp.: 45°C			Condensing Temp.: 50°C		
		Capacity(kw)	Power(kw)	Current(A)	Capacity(kw)	Power(kw)	Current(A)	Capacity(kw)	Power(kw)	Current(A)	Capacity(kw)	Power(kw)	Current(A)
30Hz	-45	8.58	11.93	39.92	7.92	12.87	41.52	7.32	13.92	43.12	6.76	15.04	44.82
	-40	10.20	12.22	40.62	9.47	13.19	42.32	8.79	14.26	43.82	8.13	15.45	45.52
	-30	15.44	12.82	42.32	14.36	13.85	43.92	13.35	15.02	45.52	12.42	16.28	47.32
	-20	23.83	13.41	44.12	22.18	14.54	45.82	20.63	15.81	47.42	19.19	17.19	49.22
	-15	29.53	13.69	44.72	27.47	14.89	46.42	25.55	16.23	48.02	23.74	17.69	49.82
	-10	36.45	13.99	45.12	33.89	15.24	47.02	31.50	16.65	48.52	29.25	18.18	50.32
50Hz	-45	10.40	13.80	40.90	9.53	14.96	42.50	8.73	16.25	44.10	8.00	17.66	45.80
	-40	12.31	14.29	42.10	11.44	15.47	43.80	10.63	16.77	45.30	9.86	18.20	47.00
	-30	18.55	15.33	44.30	17.39	16.54	45.90	16.30	17.89	47.50	15.29	19.34	49.30
	-20	28.52	16.43	46.60	26.72	17.69	48.30	25.02	19.08	49.90	23.44	20.59	51.70
	-15	35.22	17.00	47.70	32.93	18.30	49.40	30.79	19.72	51.00	28.77	21.26	52.80
	-10	43.28	17.60	48.60	40.38	18.92	50.50	37.67	20.38	52.00	35.12	21.95	53.80
70Hz	-45	12.22	15.67	41.88	11.14	17.05	43.48	10.14	18.58	45.08	9.24	20.28	46.78
	-40	14.42	16.36	43.58	13.41	17.75	45.28	12.47	19.28	46.78	11.59	20.95	48.48
	-30	21.66	17.84	46.28	20.42	19.23	47.88	19.25	20.76	49.48	18.16	22.40	51.28
	-20	33.21	19.45	49.08	31.26	20.84	50.78	29.41	22.35	52.38	27.69	23.99	54.18
	-15	40.91	20.31	50.68	38.39	21.71	52.38	36.03	23.21	53.98	33.80	24.83	55.78
	-10	50.11	21.21	52.08	46.87	22.60	53.98	43.84	24.11	55.48	40.99	25.72	57.28
-5	61.04	22.15	53.58	56.91	23.53	55.28	53.04	25.02	56.88	49.42	26.63	58.78	



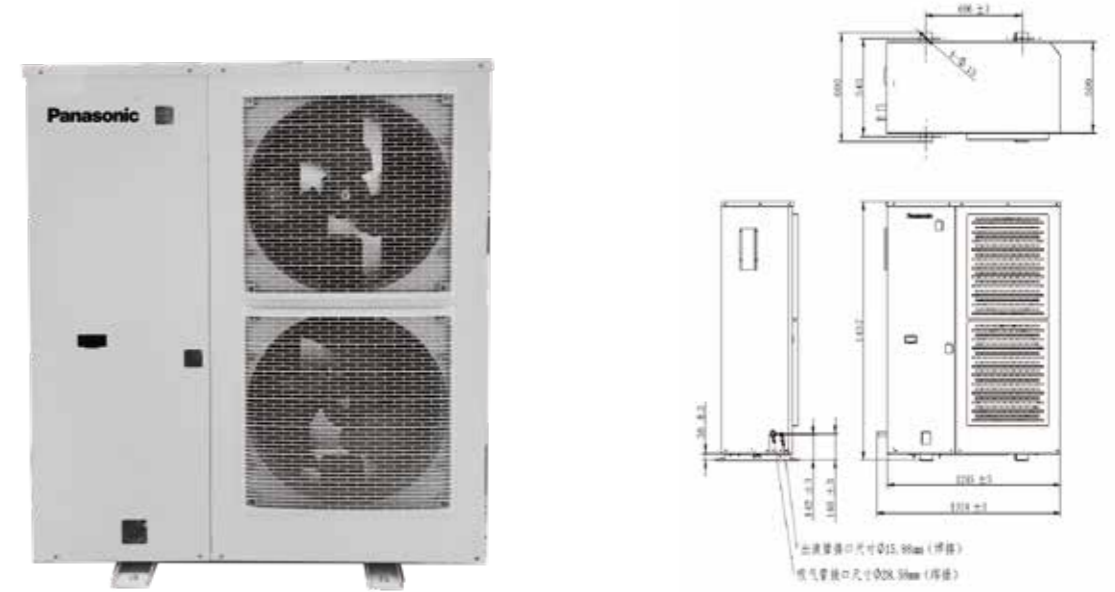
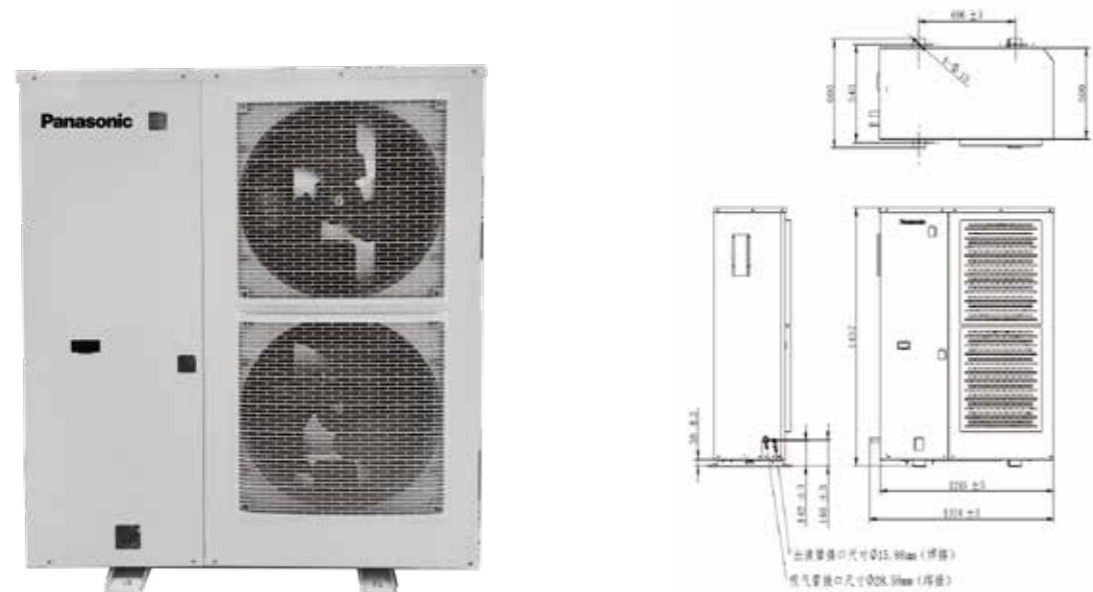
Technical Parameters		R22	R404A
Model		OCU-S400HF	OCU-NS400HF
Nominal Output		3.0kw	
Ambient Temp. Range		-25 ~ +48°C	
Evaporative Temp. Range		-15 ~ +10°C	
Compressor	Cooling Type	Liquid Cooling	Air Cooling
	Oil	SAY-56T 1.7L	FV68S 1.7L
	Crankcase Heater	220V 35W	
Condenser	Structure		Fin and Tube
	Fan	Voltage/Power	220V/70W
		Diameter	460mm
		Quantity	1
Liquid Receiver Volume		3L	
Suction Accumulator Volume		—	
Safety Protecting	Anti-phase Protector	Yes	
	High pressure protection	2.6MPa	2.78MPa
	Exhaust temperature protection	130°C	
	Overcurrent protection	9.5A	
	Fan overload protection	135°C	
	Fuse	5A	
	Motor temperature protection	145°C	
Connection	Gas Inlet	19.05mm	
	Liquid Outlet	9.53mm	
Product Weight		103kg	
Sound Level		54dB	

Technical Parameters		R22		R404A	
Model		OCU-S500HF	OCU-S600HF	OCU-NS500HF	OCU-NS600HF
Nominal Output		3.75kw	4.5kw	3.75kw	4.5kw
Ambient Temp. Range		-25 ~ +48°C			
Evaporative Temp. Range		-15 ~ +10°C			
Compressor	Cooling Type	Liquid Cooling		Air Cooling	
	Oil	SAY-56T 1.7L		FV68S 1.7L	
	Crankcase Heater	220V 35W			
Condenser	Structure		Fin and Tube		
	Fan	Voltage/Power	220V/70W		
		Diameter	460mm		
		Quantity	2		
Liquid Receiver Volume		3L	6L	3L	6L
Suction Accumulator Volume		—			
Safety Protecting	Anti-phase Protector	Yes			
	High pressure protection	2.6MPa		2.78MPa	
	Exhaust temperature protection	130°C			
	Overcurrent protection	11A	13A	11A	13A
	Fan overload protection	135°C			
	Fuse	5A			
	Motor temperature protection	145°C			
Connection	Gas Inlet	19.05mm			
	Liquid Outlet	9.53mm			
Product Weight		122kg	127kg	122kg	127kg
Sound Level		57dB			



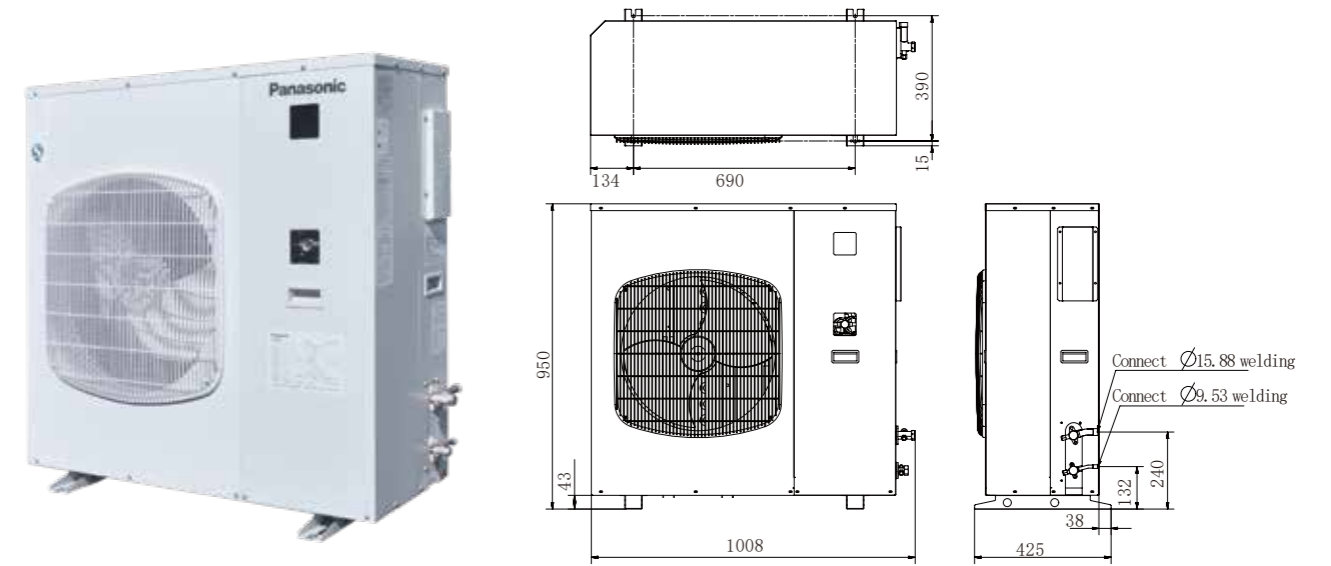
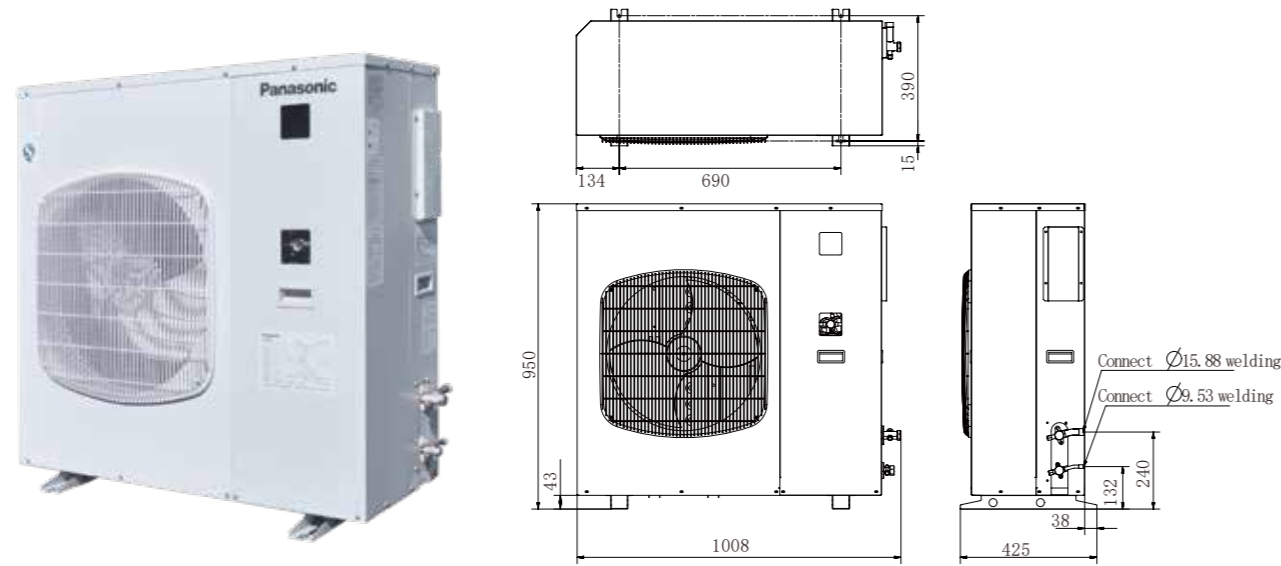
Technical Parameters		R22	R404A
Model		OCU-S700HF	OCU-NS700HF
Nominal Output		5.25kw	
Ambient Temp. Range		-25 ~ +48°C	
Evaporative Temp. Range		-15 ~ +10°C	
Compressor	Cooling Type	Liquid Cooling	Air Cooling
	Oil	SAY-56T 1.7L	FV68S 1.7L
	Crankcase Heater	220V 35W	
Condenser	Structure		Fin and Tube
	Fan	Voltage/Power	220V/70W
		Diameter	460mm
		Quantity	2
Liquid Receiver Volume		6L	
Suction Accumulator Volume		—	
Safety Protecting	Anti-phase Protector	Yes	
	High pressure protection	2.6MPa	2.78MPa
	Exhaust temperature protection	130°C	
	Overcurrent protection	15A	
	Fan overload protection	135°C	
	Fuse	5A	
	Motor temperature protection	145°C	
Connection	Gas Inlet	19.05mm	
	Liquid Outlet	9.53mm	
Product Weight		131kg	
Sound Level		57dB	

Technical Parameters		R22	R404A
Model		OCU-S800HF	OCU-NS800HF
Nominal Output		6kw	
Ambient Temp. Range		-25 ~ +48°C	
Evaporative Temp. Range		-15 ~ +10°C	
Compressor	Cooling Type	Liquid Cooling	Air Cooling
	Oil	SAY-56T 2.8L	FV68S 2.8L
	Crankcase Heater	220/44W×2	
Condenser	Structure		Fin and Tube
	Fan	Voltage/Power	380V/60W
		Diameter	500mm
		Quantity	2
Liquid Receiver Volume		16L	
Suction Accumulator Volume		3.8L	
Safety Protecting	Anti-phase Protector	Yes	
	High pressure protection	2.7MPa	
	Exhaust temperature protection	130°C	
	Overcurrent protection	24A	
	Fan overload protection	135°C	
	Fuse	5A	
	Motor temperature protection	—	
Connection	Gas Inlet	28.58mm	
	Liquid Outlet	15.88mm	
Product Weight		238kg	
Sound Level		62dB	



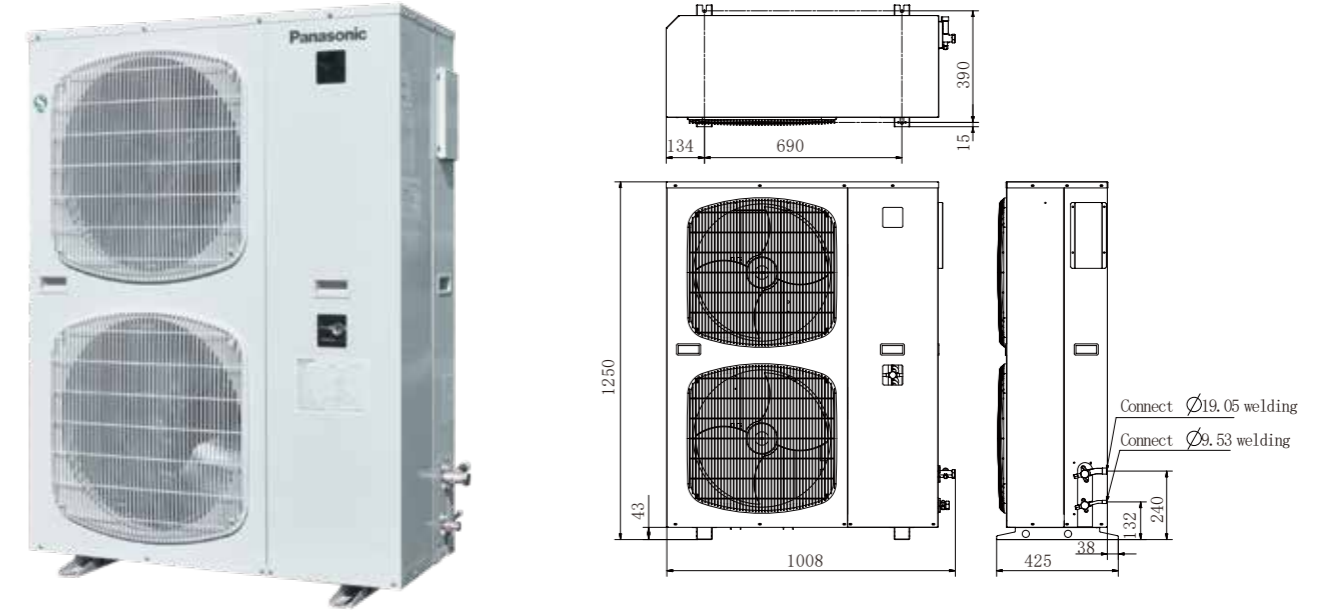
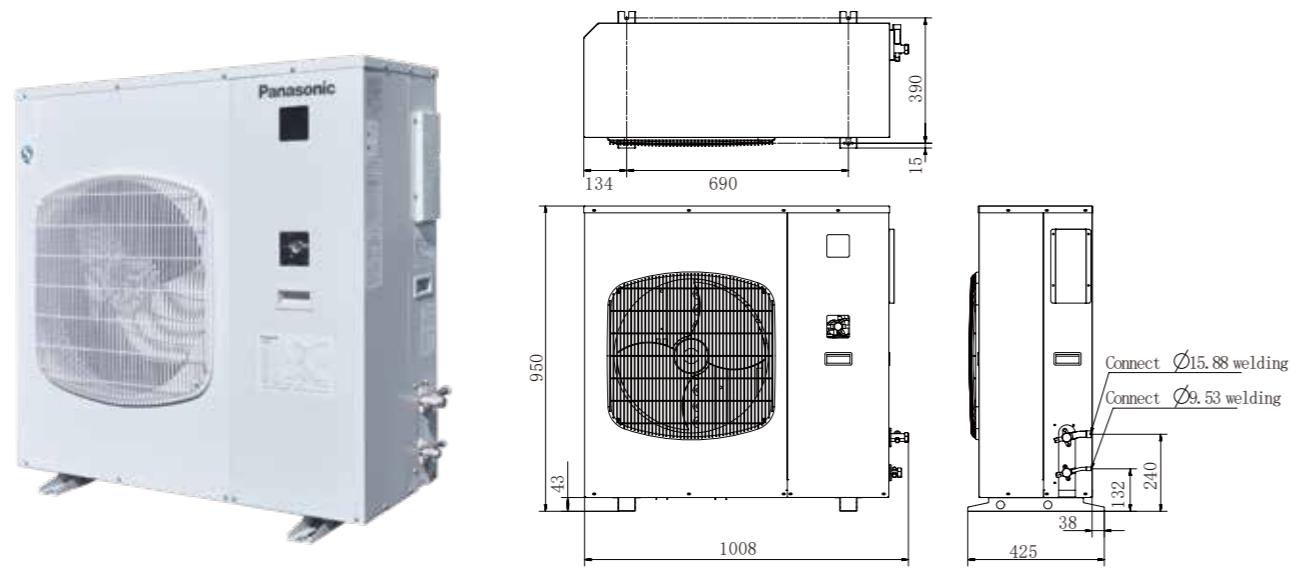
Technical Parameters		R404A	
Model		OCU-NR800DSF-K	OCU-NR800DSF-K
Nominal Output		6kw	
Ambient Temp. Range		-15 ~ +43°C	
Evaporative Temp. Range		-30 ~ +5°C	
Compressor	Cooling Type	Liquid Cooling	
	Oil	FV68S	FV32S
	Crankcase Heater	220V 35W	
Condenser	Structure		Fin and Tube
	Fan	Voltage/Power	120W
		Diameter	528mm
		Quantity	2
Liquid Receiver Volume		16L	
Suction Accumulator Volume		3.8L	
Safety Protecting	Anti-phase Protector	Yes	
	High pressure protection	2.8MPa	
	Exhaust temperature protection	130°C	
	Overcurrent protection	15A	
	Fan overload protection	135°C	
	Fuse	5A	
	Motor temperature protection	145°C	
Connection	Gas Inlet	28.58mm	
	Liquid Outlet	15.88mm	
Product Weight		235kg	
Sound Level		69dB	

Technical Parameters		R404A	
Model		OCU-NS800HF	
Nominal Output		6kw	
Ambient Temp. Range		-25 ~ +48°C	
Evaporative Temp. Range		-40 ~ 5°C	
Compressor	Cooling Type	Liquid Cooling	
	Oil	FV68S 2.5L	
	Crankcase Heater	220/44W×2	
Condenser	Structure		Fin and Tube
	Fan	Voltage/Power	120W
		Diameter	528mm
		Quantity	2
Liquid Receiver Volume		16L	
Suction Accumulator Volume		3.8L	
Safety Protecting	Anti-phase Protector	Yes	
	High pressure protection	2.7MPa	
	Exhaust temperature protection	130°C	
	Overcurrent protection	24A	
	Fan overload protection	135°C	
	Fuse	5A	
	Motor temperature protection	—	
Connection	Gas Inlet	28.58mm	
	Liquid Outlet	15.88mm	
Product Weight		210kg	
Sound Level		66dB(180Hz)、67.5dB(240Hz)	



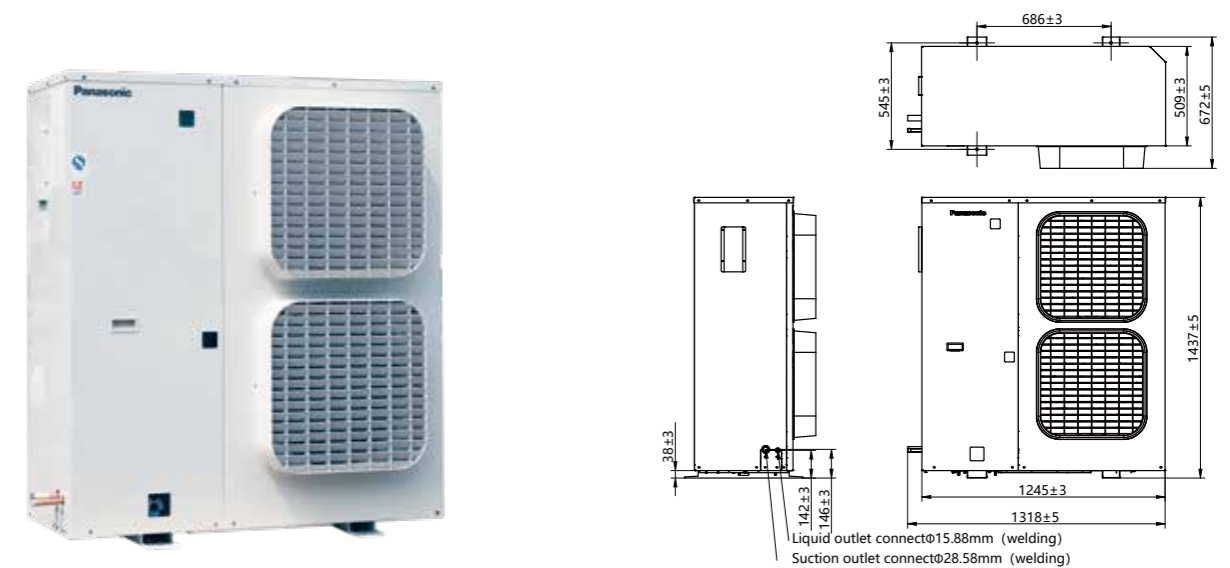
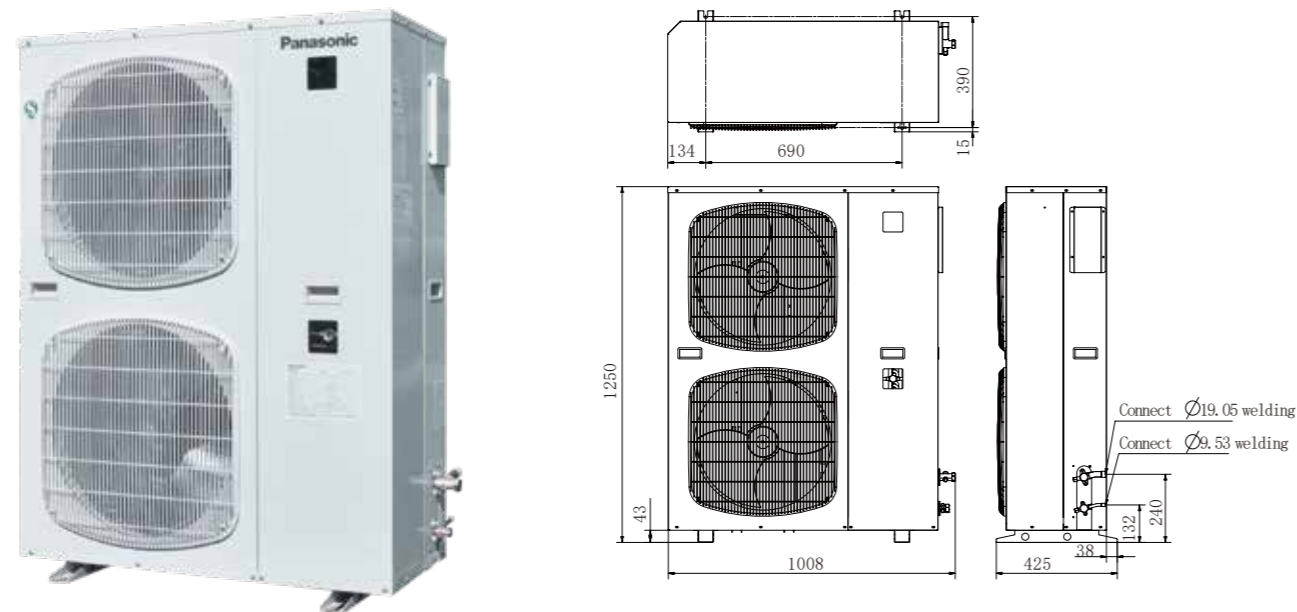
Technical Parameters		R404A	
Model		OCU-NR200SF-D	OCU-NR300SF-D
Nominal Output		1.5kw	2.2kw
Ambient Temp. Range		-25 ~ +48°C	
Evaporative Temp. Range		-40 ~ -5°C	
Compressor	Cooling Type	Liquid Cooling	
	Oil	FV68S 0.9L	
	Crankcase Heater	240V 28W	
Condenser	Structure		Fin and Tube
	Fan	Voltage/Power	220V/70W
		Diameter	460mm
		Quantity	1
Liquid Receiver Volume		3L	
Suction Accumulator Volume		2L	
Safety Protecting	Anti-phase Protector	No	
	High pressure protection	2.78MPa	
	Exhaust temperature protection	130°C	
	Overcurrent protection	13A	24A
	Fan overload protection	135°C	
	Fuse	5A	
	Motor temperature protection	无	
Connection	Gas Inlet	15.88mm	
	Liquid Outlet	9.53mm	
Product Weight		95kg	97kg
Sound Level		54.98dB	57.59dB

Technical Parameters		R22	R404A
Model		OCU-R300SF	OCU-NR300SF
Nominal Output		2.2kw	
Ambient Temp. Range		-25 ~ +48°C	
Evaporative Temp. Range		-40 ~ -5°C	
Compressor	Cooling Type	Liquid Cooling	
	Oil	3GSD-T 0.9L	FV68S 0.9L
	Crankcase Heater	240V 25W	
Condenser	Structure		Fin and Tube
	Fan	Voltage/Power	220V/70W
		Diameter	460mm
		Quantity	1
Liquid Receiver Volume		3L	
Suction Accumulator Volume		2L	
Safety Protecting	Anti-phase Protector	Yes	
	High pressure protection	2.6MPa	2.78MPa
	Exhaust temperature protection	130°C	
	Overcurrent protection	5.5A	
	Fan overload protection	135°C	
	Fuse	5A	
	Motor temperature protection	Yes	
Connection	Gas Inlet	15.88mm	
	Liquid Outlet	9.53mm	
Product Weight		95kg	
Sound Level		54dB	



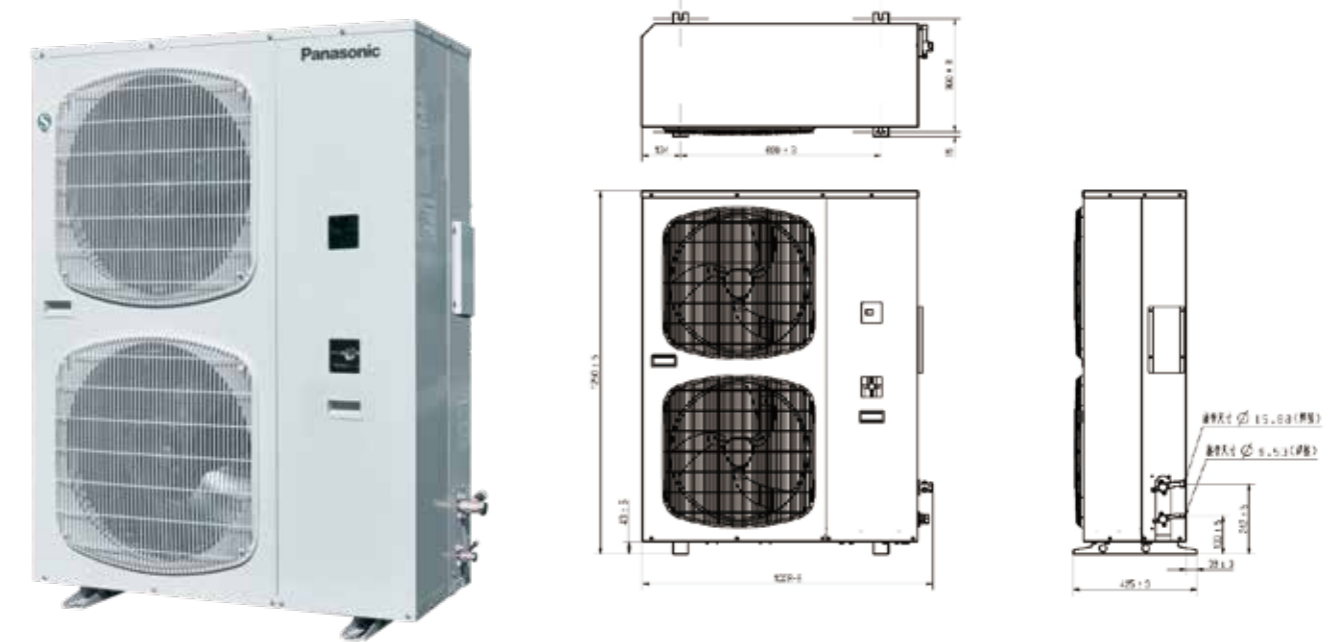
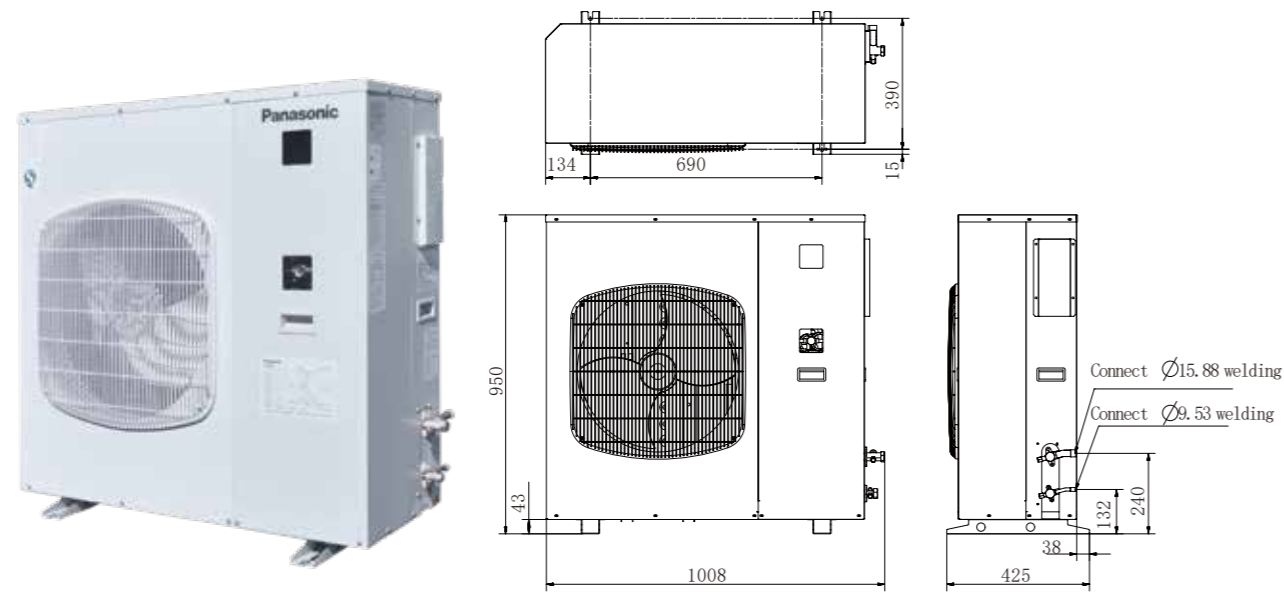
Technical Parameters		R22		R404A		
Model		OCU-S400SF	OCU-S400QSF	OCU-NS400SF	OCU-NS400QSF	
Nominal Output		3.0kw				
Ambient Temp. Range		-25 ~ +48°C				
Evaporative Temp. Range		-40 ~ -15°C				
Compressor	Cooling Type	Liquid Cooling	Air-supply Cooling	Liquid Cooling	Air-supply Cooling	
	Oil	3GSD 1.7L		FV32S 1.7L		
	Crankcase Heater	220V 35W				
Condenser	Structure		Fin and Tube			
	Fan	Voltage/Power		220V/70W		
		Diameter		460mm		
		Quantity		1		
Liquid Receiver Volume		3L				
Suction Accumulator Volume		2L				
Safety Protecting	Anti-phase Protector		Yes			
	High pressure protection		2.6MPa		2.78MPa	
	Exhaust temperature protection		130°C			
	Overcurrent protection		9.5A			
	Fan overload protection		135°C			
	Fuse		5A			
	Motor temperature protection		Yes			
Connection	Gas Inlet		19.05mm			
	Liquid Outlet		9.53mm			
Product Weight		109kg	111kg	109kg	111kg	
Sound Level		54dB				

Technical Parameters		R22		R404A		
Model		OCU-S500QSF	OCU-S600QSF	OCU-NS500QSF	OCU-NS600QSF	
Nominal Output		3.75kw	4.5kw	3.75kw	4.5kw	
Ambient Temp. Range		-25 ~ +48°C				
Evaporative Temp. Range		-40 ~ -15°C				
Compressor	Cooling Type	Air-supply Cooling				
	Oil	3GSD 1.7L		FV32S 1.7L		
	Crankcase Heater	220V 35W				
Condenser	Structure		Fin and Tube			
	Fan	Voltage/Power		220V/70W		
		Diameter		460mm		
		Quantity		2		
Liquid Receiver Volume		3L	6L	3L	6L	
Suction Accumulator Volume		3.5L				
Safety Protecting	Anti-phase Protector		Yes			
	High pressure protection		2.6MPa		2.78MPa	
	Exhaust temperature protection		130°C			
	Overcurrent protection		11A	13A	11A	13A
	Fan overload protection		135°C			
	Fuse		5A			
	Motor temperature protection		Yes			
Connection	Gas Inlet		19.05mm			
	Liquid Outlet		9.53mm			
Product Weight		130kg	142kg	130kg	142kg	
Sound Level		57dB				



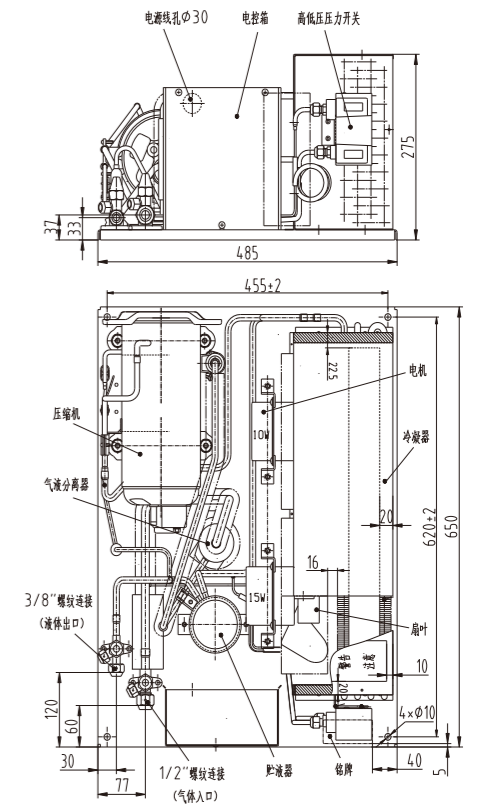
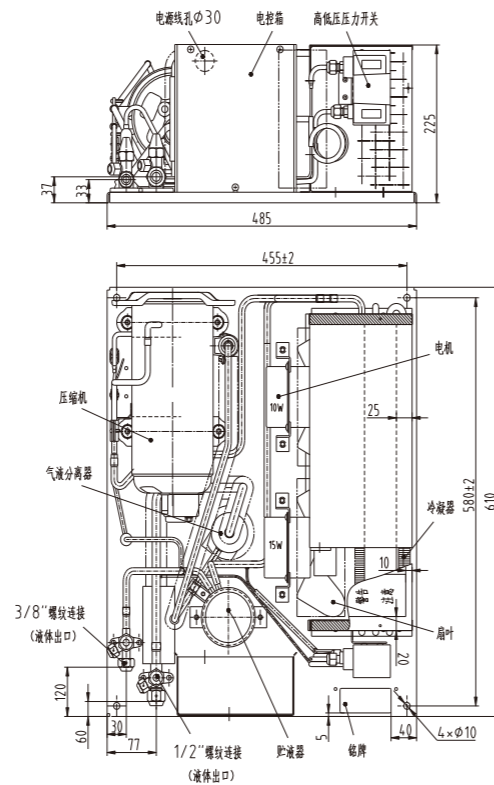
Technical Parameters		R22		R404A	
Model		OCU-S500SF	OCU-S600SF	OCU-NS500SF	OCU-NS600SF
Nominal Output		3.75kw	4.5kw	3.75kw	4.5kw
Ambient Temp. Range		-25 ~ +48°C			
Evaporative Temp. Range		-40 ~ -15°C			
Compressor	Cooling Type	Liquid Cooling			
	Oil	3GSD 1.7L		FV32S 1.7L	
	Crankcase Heater	220V 35W			
Condenser	Structure		Fin and Tube		
	Fan	Voltage/Power	220V/70W		
		Diameter	460mm		
		Quantity	2		
Liquid Receiver Volume		3L	6L	3L	6L
Suction Accumulator Volume		3.5L			
Safety Protecting	Anti-phase Protector	Yes			
	High pressure protection	2.6MPa		2.78MPa	
	Exhaust temperature protection	130°C			
	Overcurrent protection	11A	13A	11A	13A
	Fan overload protection	135°C			
	Fuse	5A			
	Motor temperature protection	Yes			
Connection	Gas Inlet	19.05mm			
	Liquid Outlet	9.53mm			
Product Weight		128kg	140kg	128kg	140kg
Sound Level		57dB			

Technical Parameters		R22		R404A	
Model		OCU-S800QSF		OCU-NS800QSF	
Nominal Output		6kw			
Ambient Temp. Range		-25 ~ +48°C			
Evaporative Temp. Range		-40 ~ -5°C			
Compressor	Cooling Type	Air-supply Cooling			
	Oil	3GSD 1.7L		FV32S 1.7L	
	Crankcase Heater	220/44W×2			
Condenser	Structure		Fin and Tube		
	Fan	Voltage/Power	380V/60W		
		Diameter	500mm		
		Quantity	2		
Liquid Receiver Volume		16L			
Suction Accumulator Volume		3.8L			
Safety Protecting	Anti-phase Protector	Yes			
	High pressure protection	2.4MPa		2.7MPa	
	Exhaust temperature protection	130°C			
	Overcurrent protection	24A			
	Fan overload protection	135°C			
	Fuse	5A			
	Motor temperature protection	—			
Connection	Gas Inlet	28.58mm			
	Liquid Outlet	15.88mm			
Product Weight		241kg			
Sound Level		62dB			



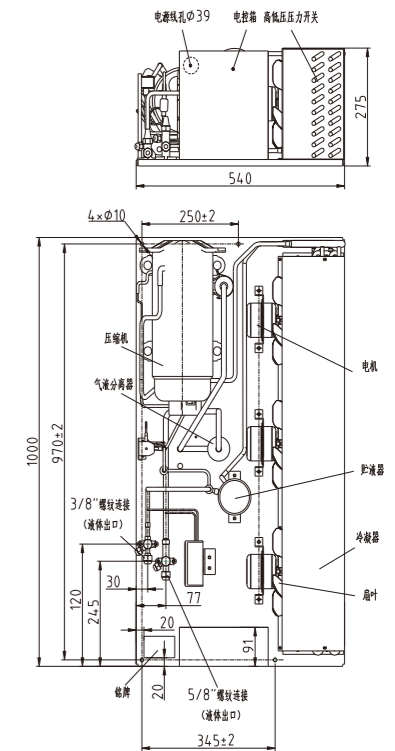
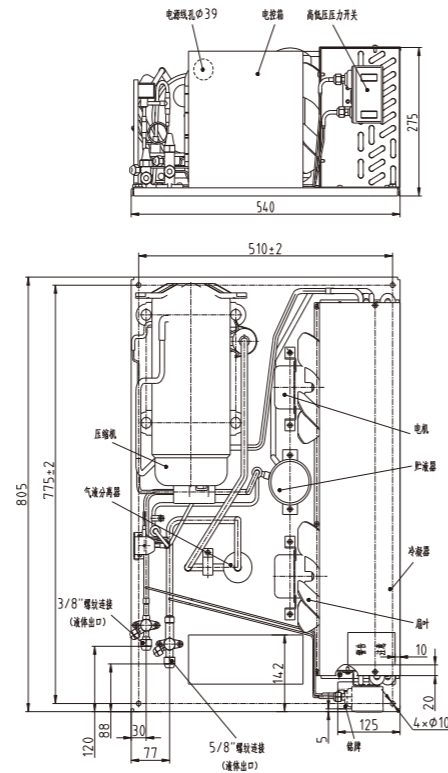
Technical Parameters		R404A	
Model		OCU-NR300DSF	
Nominal Output		2.2kw	
Ambient Temp. Range		-25 ~ +48°C	
Evaporative Temp. Range		-40 ~ -5°C	
Oil		SV68S 0.9L	
Condenser	Structure		Fin and Tube
	Fan	Voltage/Power	220V/70W
		Diameter	460mm
		Quantity	1
Liquid Receiver Volume		3L	
Suction Accumulator Volume		2L	
Safety Protecting	Anti-phase Protector	Yes	
	High pressure protection	2.78MPa	
	Exhaust temperature protection	125°C	
	Overcurrent protection	6.2A	
	Fan overload protection	135°C	
	Fuse	5A	
	Motor temperature protection	—	
Connection	Gas Inlet	15.88mm	
	Liquid Outlet	9.53mm	
Product Weight		100kg	
Sound Level		54dB 50Hz	

Technical Parameters		R404A	
Model		OCU-NR450DSF	OCU-NR600DSF
Nominal Output		3.375kw	4.5kw
Ambient Temp. Range		-25 ~ +48°C	
Evaporative Temp. Range		-40 ~ -5°C	
Oil		FV68S 1.35L	FV68S 1.9L
Condenser	Structure		Fin and Tube
	Fan	Voltage/Power	220V/70W
		Diameter	460mm
		Quantity	2
Liquid Receiver Volume		6L	
Suction Accumulator Volume		2L	3.8L
Safety Protecting	Anti-phase Protector	—	
	High pressure protection	2.8MPa	
	Exhaust temperature protection	125°C	
	Overcurrent protection	25A	
	Fan overload protection	135°C	
	Fuse	5A	
	Motor temperature protection	—	
Connection	Gas Inlet	15.88mm	22.22mm
	Liquid Outlet	9.52mm	12.7mm
Product Weight		120kg	152kg
Sound Level		58dB	60dB(120Hz), 65dB(180Hz)



Technical Parameters			R22	R404A
Model			UF-RH860SFJ	UF-NRH860SFJ
Power Supply			Single phase 220V 50Hz	
Refrigerant			R22	R404A
Evaporative Temp. Range			-40 ~ -5°C	
Ambient Temp. Range			-7 ~ +43°C	
Installation place			Indoor	
Sound Level			51db(A)	
Compressor	Oil	Type	3GSD-T	FV68S
		Charge Amount/set	0.4L	
Condenser	Type		Fin and Tube	
	Air Volume		750	
Liquid Receiver Volume			0.8L	0.74L
Connection	Liquid Outlet		Φ9.53mm	
	Liquid Inlet		—	
	Gas Outlet		—	
	Gas Inlet		Φ12.7mm	
Net Weight			32kg	
Wiring Capacity	Power Circuit	Circuit Breaker Capacity (RC)	5A	
		Wiring Diameter	2mm ²	
		Grounding Wire Diameter	2mm ²	

Technical Parameters			R22	R404A
Model			UF-RH1160SFJ	UF-NRH1160SFJ
Power Supply			Single phase 220V 50Hz	
Refrigerant			R22	R404A
Evaporative Temp. Range			-40 ~ -5°C	
Ambient Temp. Range			-7 ~ +43°C	
Installation place			Indoor	
Sound Level			53db(A)	
Compressor	Oil	Type	3GSD-T	FV68S
		Charge Amount/set	0.4L	
Condenser	Type		Fin and Tube	
	Air Volume		910	
Liquid Receiver Volume			0.74L	
Connection	Liquid Outlet		Φ9.53mm	
	Liquid Inlet		—	
	Gas Outlet		—	
	Gas Inlet		Φ12.7mm	
Net Weight			34kg	
Wiring Capacity	Power Circuit	Circuit Breaker Capacity (RC)	5A	
		Wiring Diameter	2mm ²	
		Grounding Wire Diameter	2mm ²	



Technical Parameters			R22	R404A
Model			UF-RH1580SFJ	UF-NRH1580SFJ
Power Supply			Three phase 380V 50Hz	
Refrigerant			R22	R404A
Evaporative Temp. Range			-40 ~ -5°C	
Ambient Temp. Range			-7 ~ +43°C	
Installation place			Indoor	
Sound Level			53.4db(A)	54db(A)
Compressor	Oil	Type	3GSD-T	FV68S
		Charge Amount/set	0.9L	
Condenser	Type		Fin and Tube	
	Air Volume		1000	
Liquid Receiver Volume			1.1L	
Connection	Liquid Outlet		Φ9.53mm	
	Liquid Inlet		—	
	Gas Outlet		—	
	Gas Inlet		Φ15.88mm	
Net Weight			60.5kg	
Wiring Capacity	Power Circuit	Circuit Breaker Capacity (RC)	5A	
		Wiring Diameter	2mm ²	
		Grounding Wire Diameter	2mm ²	

Technical Parameters			R22
Model			UF-RH2280LFJ
Power Supply			Three phase 380V 50Hz
Refrigerant			R22
Evaporative Temp. Range			-40 ~ -20°C
Ambient Temp. Range			-7 ~ +43°C
Installation place			Indoor
Sound Level			54db(A)
Compressor	Oil	Type	3GSD-T
		Charge Amount/set	0.9L
Condenser	Type		Fin and Tube
	Air Volume		1000
Liquid Receiver Volume			1.1L
Connection	Liquid Outlet		Φ9.53mm
	Liquid Inlet		—
	Gas Outlet		—
	Gas Inlet		Φ15.88mm
Net Weight			65kg
Wiring Capacity	Power Circuit	Circuit Breaker Capacity (RC)	5A
		Wiring Diameter	2mm ²
		Grounding Wire Diameter	2mm ²



Technical Parameters		R410A	
Model		OCU-CR300DQSF	OCU-CR400DQSF
Electric System		3P 380V 50Hz	
Nominal Output		2.2kW	3kW
Ambient Temp. Range		-25 ~ +48°C	
Evaporative Temp. Range		-30 ~ +5°C	
Compressor	Cooling Type	Air-supply Cooling	
	Oil	FV68S 0.5L	FV68S 0.9L
	Crankcase Heater	20W	28W
Condenser	Structure	Pin and Tube	
	Motor Power and Quantity	85W×1	
	Fan Diameter and Quantity	Φ490mm×1	
Liquid Receiver Volume		3L	
Suction Accumulator Volume		2L	
Safety Protecting	Fusible plug	Yes	
	Anti-phase Protector	Yes	
	High pressure protection	3.8MPa	
	Low pressure protection	0.15MPa	
	Exhaust temperature protection	110°C	
	Overcurrent protection	11A	15A
	Fuse	5A	
Connection	Gas Inlet	Φ12.7mm(thread port)	Φ15.88mm(thread port)
	Liquid Outlet	Φ9.52mm(thread port)	
Dimension (L×W×H)		1040mm×450mm×810mm	
Product Weight		71kg	77kg

Technical Parameters		R410A	
Model		OCU-CR600DQSF	
Electric System		3P 380V 50Hz	
Nominal Output		4.5kW	
Ambient Temp. Range		-25 ~ +48°C	
Evaporative Temp. Range		-30 ~ +5°C	
Compressor	Cooling Type	Air-supply Cooling	
	Oil	FV68S 1.3L	
	Crankcase Heater	28W	
Condenser	Structure	Pin and Tube	
	Motor Power and Quantity	85W×2	
	Fan Diameter and Quantity	Φ490mm×2	
Liquid Receiver Volume		6L	
Suction Accumulator Volume		2L	
Safety Protecting	Fusible plug	Yes	
	Anti-phase Protector	Yes	
	High pressure protection	3.8MPa	
	Low pressure protection	0.15MPa	
	Exhaust temperature protection	110°C	
	Overcurrent protection	18A	
Connection	Fuse	5A	
	Gas Inlet	Φ19.05mm(Thread port)	
Liquid Outlet		Φ9.52mm(Thread port)	
Dimension (L×W×H)		1040mm×450mm×1260mm	
Product Weight		92kg	

Note: The outermost dimension includes the foundation and valve
 Note: The weight is a provisional estimate

10、 15HP Medium and Low Temp. Variable Frequency Outdoor Condensing Unit



Technical Parameters		R410A		
Item	Unit	Specification		
Model		OCU-CS1000VSF	OCU-CS1500VSF	
Code		—		
Product Standards		GB/T 21363-2018		
Power Source	Power Circuit	3PH.380V.60Hz		
	Operating Circuit	1PH.220V.60Hz		
Scope	Installation place	Outdoor		
	Refrigerant	R410A		
	Evaporative Temp. Range	°C	-45 ~ -5	
	Ambient Temp. Range	°C	-7 ~ 43	
	Voltage variation	Power supply	±10	
		Operating supply	±10	
	Voltage Imbalance Rate	%	≤2	
Performance Parameter	Nominal Output	kW	7.4 11	
	Nominal Capacity※1	kW	25.4 28.88	
	Input Power※1	kW	13.01 14.83	
	COP※1	kW/kW	1.95	
	Operating Current※2	A	30.00 31.50	
	Maximum Load Current※3	A	32.00 35.00	
Compressor	Model & Quantity	5CC120NA03 × 1台 5CC120NA03 × 1台		
	Displacement/set	cm³/rev	118	
	Cooling Type	Liquid Cooling		
	Oil	Type	FV32S	
Charge Amount		L	2.5×1	
Accessory	Vessel	Liquid Receiver Volume	L	25
Dimension	Length	mm	1030	
	Width	mm	1020	
	Height	mm	1910	
Safety Protecting		--	Protection for High exhaust temperature, overcurrent , high-voltage , temperature and pressure sensor fault , frequency converter fault , communication fault , input and output phase loss , fan driver alarm	
Product Weight (excluding refrigerant)		kg	385 425	
Connection	Liquid Outlet	mm	Φ15.88(Welding joint)	
	Gas Inlet	mm	Φ34.93(Welding joint)	

※1: Nominal operating conditions: evaporation temperature -7 °C, condensation temperature 45 °C, suction temperature 18 °C, speed 70rps.

※2: Operating conditions: evaporation temperature -7 °C, condensation temperature 45 °C, suction temperature 18 °C, speed 70rps.

※3: Maximum load conditions: evaporation temperature -5 °C, condensation temperature 50 °C, suction temperature 18 °C, speed 70rps.

20HP Medium and Low Temp. Variable Frequency Outdoor Condensing Unit



Technical Parameters		R410A		
Item	Unit	Specification		
Model		OCU-CS2000VS2F		
Code		—		
Product Standards		GB/T 21363-2018		
Power Source	Power Circuit	3PH.380V.60Hz		
	Operating Circuit	1PH.220V.60Hz		
Scope	Installation place	Outdoor		
	Refrigerant	R410A		
	Evaporative Temp. Range	°C	-45 ~ -5	
	Ambient Temp. Range	°C	-7 ~ 43	
	Voltage variation	Power supply	±10	
		Operating supply	±10	
	Voltage Imbalance Rate	%	≤2	
Performance Parameter	Nominal Output	kW	14.7	
	Nominal Capacity※1	kW	52.8	
	Input Power※1	kW	25.19	
	COP※1	kW/kW	2.10	
	Operating Current※2	A	55.00	
	Maximum Load Current※3	A	69.00	
Compressor	Model & Quantity	5CC120NA03 × 1 + 5CC120WA03 × 1		
	Displacement/set	cm³/rev	239	
	Cooling Type	Liquid Cooling		
	Oil	Type	FV32S	
Charge Amount		L	2.5×2	
Accessory	Vessel	Liquid Receiver Volume	L	50
Dimension	Length	mm	1920	
	Width	mm	1035	
	Height	mm	1925	
Safety Protecting		--	Protection for High exhaust temperature, overcurrent , high-voltage , temperature and pressure sensor fault , frequency converter fault , communication fault , input and output phase loss , fan driver alarm	
Product Weight (excluding refrigerant)		kg	695	
Connection	Liquid Outlet	mm	Φ22.22(Welding joint)	
	Gas Inlet	mm	Φ41.28 (Welding joint)	

※1: Nominal operating conditions: evaporation temperature -7 °C, condensation temperature 45 °C, suction temperature 18 °C, speed 70rps.

※2: Operating conditions: evaporation temperature -7 °C, condensation temperature 45 °C, suction temperature 18 °C, speed 70rps.

※3: Maximum load conditions: evaporation temperature -5 °C, condensation temperature 50 °C, suction temperature 18 °C, speed 80rps.